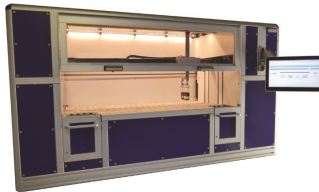
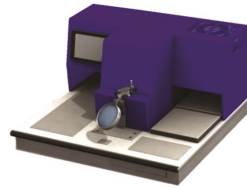
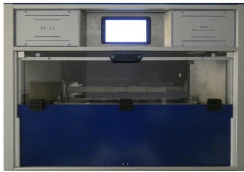


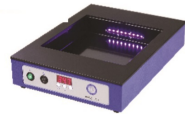


**Weinkauff Medizin & Umwelttechnik**

**Equipment and Consumables for Pathology**



**Pathology Partner**



**Full Equipment for  
Pathology    Histology  
Cytology    Anatomy**

# Certificate

The certification body TAW Cert GmbH  
Certification Company for Management-Systems and Personnel  
hereby certifies that



**Weinkauf Medizin & Umwelttechnik**

Ringstr. 28  
D-91352 Hallerndorf

Scope  
**Manufacture and sale of laboratory equipment**

has successfully established and is working in accordance with  
a quality management system.

A certification audit on 15. Jul 2022 provided proof  
that all requirements according to

## DIN EN ISO 9001:2015

have been satisfied.

Initial certification: 30. Aug 2010

This certificate is valid from 30. Aug 2022 to 29. Aug 2025

Certificate Registration No.: QM-020610-EN

Altdorf, 08. Aug 2022

Oliver Wenk, CEO TAW Cert GmbH



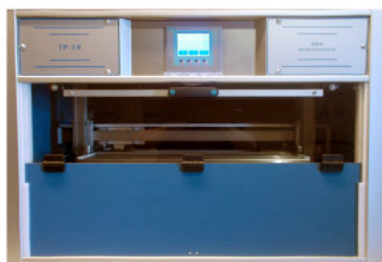
**TAW Cert GmbH • Fritz-Bauer-Str. 13 • D-90518 Altdorf**

This certificate is the property of TAW Cert GmbH

Page 1 of 1

## MEPHISTO 12 Tissue Processor TP 12

## MEPHISTO 16 Tissue Processor TP 14



Tissue processor with 12 or 14 stations.  
Capacity: 100 or 300 cassettes.  
Alternatively in the short program up to 1500 biopsies daily.

Up to 6 stations can be heated, except paraffin  
also xylene and formalin are heated.

6 programs freely selectable and storable.

Agitation adjustable.

Weekend program with up to 99 hours start delay.

Emergency power supply for securing the  
Tissue samples.

Connection to a laboratory exhaust air possible.

No valves, no clogged pipes, no cleaning fluids, no cleaning program,  
no maintenance costs, intervention in the current program is possible at any time.

Intuitively operable programming interface.



Startscreen



Password protected



Retrievable event log



Simple solvent change.  
The front of the device can be opened completely.



Battery backup

Technical specifications:  
Dimensions: W 1100 x D 600 x H 769  
Dimensions: W 895 x D 630 x H 769mm  
Reagents Container: Stainless steel 3.5 liters  
Power supply: 230V / 50Hz / 1,2KW  
Weight: 66 kg / 77kg

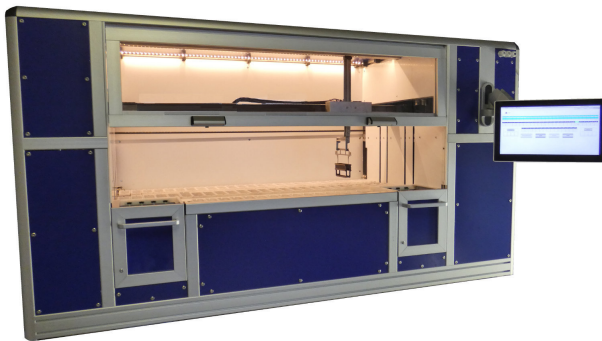
**Quality Made in Germany**

## Staining automat LS 72

for standard and special stains.

Multifunctional Stainer with 72 cuvettes

Multiple staining with up to 40 slide baskets simultaneously possible.



Staining automat for highest demands with a maximum Performance of 1,800 slides per hour.

Up to 20 programs freely selectable.

Loading station for 4 slide baskets.

Discharge station for 4 slide baskets.

With up to 6 flowing water cuvettes.

Agitation adjustable.

Optional built-in activated carbon filter or connection to an existing exhaust air system.

Adaptable to almost all coverslipper.

Slide holder for 20 or 30 slides.

### Technical specifications:

Dimensions: W x D x H: 200 x 75 x 120cm

Weight: 210 Kg Article No. 72000

Connected load: 230V / 50Hz / 1,2KW



## Paraffin-Embedding-Station



### Modular Paraffin Embedding Station

Paraffin dispenser unit with 2 heated trays for cassettes and / or moulds, controllable paraffin outlet, Lighting, magnifying glass and cooling point.

Capacity Paraffin tank 4.5 Liter.

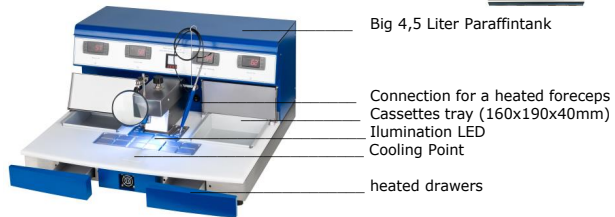
Integrated weekly timer.

Technical specifications:

Dispenser unit: B560 x T640 x H400mm, 230V / 50Hz / 1KW

Max. 70°C,

Article number: AGS20



Big 4,5 Liter Paraffintank

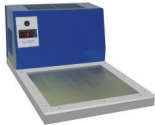
Connection for a heated forceps

Cassettes tray (160x190x40mm)

Illumination LED

Cooling Point

heated drawers



### Optional:

Cooling unit for cooling the cassettes up to max. -13 ° C.

Cooling unit: B300 X T540 x H400mm, 230V / 50Hz / 0.4KW

Max. -13 ° C.

Article number: AGS20KP



### Optional:

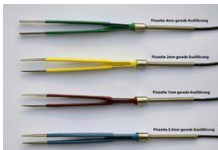
An additional heated tray for accommodating the cassettes, large enough to accommodate most traditional tissue baskets.

Heating unit: B300 X T600 x H400mm, 230V / 50Hz / 0.4KW

Max. 70°C, capacity 2.5 Liters

Article number: AGS20WP

### Various heated forceps



### Cassettes Trim

### Cassettes cleaning instrument



Cleans the cassettes of excess paraffin in order to enable an easy insertion into the clamp of the microtome.

Advantages:

No scratching with the knife more necessary.

No flying paraffinwaste

No scratched numbers or barcodes

Technical specifications:

Weight: 2.7Kg

Dimension: 240 x 160 x 170mm (D / W / H)

Temperature: max. 75 °C

230V 50Hz 0.1 KW

Article number: CT200

## Electrically heated tweezers.



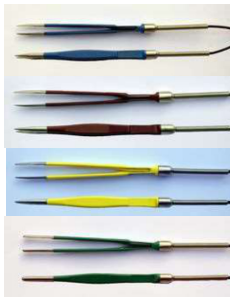
Suitable for our tweezers station.

It can connect tweezers in sizes from 0.5mm to 4mm.

The individual tweezers are color-coded according to size for easy orientation, marked. All tweezers are heated only at the tip to approx. 68 degrees.

at the tip only. The connecting cable is heat resistant up to 80 degrees, highly flexible, and resistant to kerosene.

Order numbers:



4709205 (0,5 mm tweezer) blue

4709210 (1 mm tweezer) red

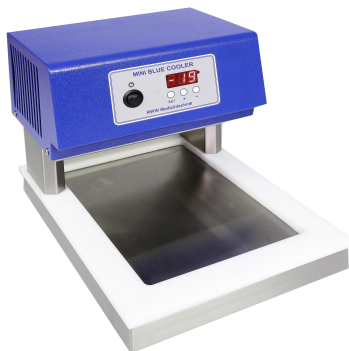
4709220 (2 mm tweezer) yellow

4709240 (4 mm tweezer) green

All tweezers can also be connected to our embedding center

Electrical connection: 24V DC 0,34A

# Mini Blue Cooler



Mini Blue Cooler, our smallest cold plate.

Digital temperature control  
Super Silent fan.  
Max. temperature: -18°C.  
36 paraffin blocks can be cooled simultaneously.  
Stainless steel frame.  
Stainless steel cooling surface.

**Technical data:**

**Dimensions of the device:**

**W/D/H: 245 x 325 x 250mm**

**Dimensions of the cooling surface:**

**230V/50Hz/200W**

**W/D 180 x 260mm**

**Refrigerant: R600a**

**Weight 12Kg**

**Connected load:**

**Article No. 31800**

**Probably the smallest compressor cooled cold plate in the world !**

Our cold plates are operated with environmentally friendly natural gas and already have the latest inverter technology.

## Table cooling plates

Blue Cooler the energy-saving cooling plate

The largest cooling surface with the smallest footprint.

Energy consumption only 0.07 KW at -15 ° C

Digital temperature control

Super silent fan.

Temperature max.: -18 ° C.

96 paraffin blocks can be cooled simultaneously.

Frame made of stainless steel.

Cooling surface made of stainless steel.

Refrigerant: R600a

Weight 14Kg

Connected load: 230V / 50Hz / 300W

Article No. 31400



Technical specifications:

Dimensions of the device:

W / D / H: 415 x 460 x 300mm

Dimensions of the cooling surface:

W / D 345 x 344mm

Para Cooler O Tischkühlplatte mit Kühlwanne.

Para Cooler O table cooling plate with cooling tub.

Digital temperature control

Wall and floor cooling.

Super silent fan.

Temperature max.: -35 ° C.

264 paraffin blocks can be cooled simultaneously.

Frame made of stainless steel.

Cooling tub made of stainless steel.



Technical specifications:

Dimensions of the device:

W / D / H: 415 x 600 x 320mm

Dimensions of the cooling surface:

W / D / H: 340 x 325 x 50mm

Refrigerant: R290

Weight 32Kg

Connected load: 230V / 50Hz / 300W

Article No. 30031

Para Cooler A flat table cooling plate.

Digital temperature control

Super silent fan.

Temperature max.: -18 ° C.

96 paraffin blocks can be cooled simultaneously.

Frame made of stainless steel.

Cooling surface made of stainless steel.



Technical specifications:

Dimensions of the device:

W / D / H: 415 x 600 x 280mm

Dimensions of the cooling surface:

B / D 345 x 344mm

Refrigerant: R600a

Weight 24Kg

Connected load: 230V / 50Hz / 300W

Article No. 31000

Quality Made in Germany

## Special space-saving cooling plates



### Blue Cool Tower

Blue Cool Tower, the energy-saving cooling plate.  
80 blocks can be cooled simultaneously.  
Energy consumption only 0.07 KW at -15 ° C  
Digital temperature control.  
Super silent fan.  
Temperature max.: -15 ° C.  
Frame made of stainless steel.  
Cooling surface made of stainless steel.

Dimensions of the device: Refrigerant: R600a  
W / D / H: 350 x 300 x 510mm Weight 14Kg  
Connected load: 230V / 50Hz / 300W  
Article No. 31600

The tissue is cooled on all sides.



### Para Cooler TW

Mobile cooling plate with cooling tub  
Digital temperature controller.  
Digital temperature display.  
Wall and floor cooling.  
Super silent fan.  
Temperature max.: -35 ° C.  
264 paraffin blocks can be cooled simultaneously.

#### Technical specifications:

Dimensions of the device: W / D / H: 485 x 610 x 670mm  
Dimensions of the cooling surface: W / D / H: 340 x 325 x 50mm  
Refrigerant: R290 Weight 42Kg  
Connected load: 230V 50Hz 0,4KW Article No. 32002



### Para Cooler TF

Mobile cooling plate  
Digital temperature display.  
Super silent fan.  
Temperature max.: -18 ° C.  
96 paraffin blocks can be cooled simultaneously.  
Cooling surface made of stainless steel.

#### Technical specifications:

Dimensions of the device: W / D / H: 485 x 610 x 670mm  
Dimensions of the cooling surface: W / D / H: 345 x 344mm  
Refrigerant: R600a Weight 42Kg  
Connected load: 230V 50Hz 0,4KW Article No. 32001

### Table cooling plates for installation



Para Cooler E for installation in the table top  
as a flat cooling plate or as a model with cooling  
trough.

Tech. Data like Cooler A / Cooler O  
Article No.: 30031 E  
Article No.: 31000 E

## Fast Fixation devices.

### Fast fixation instrument Quick-Fix M



Fast fixation instrument for big tissue samples.  
Fast fixation of tissue samples with a diameter of up to 20cm.  
Excellent fixation in a short time. Without microwaves.  
Temperature from room temperature to 60 °C free selectable.  
Automatic pressure / vacuum sistem.  
Continuous centrifugal rinsing of the tissue.  
Small particulate filter.  
Retort with a capacity of 15 L of formalin.  
Several tissue samples can be fixed at the same time.  
Special basket to hold large Tissue samples, thickness of 5mm - 10mm.



Special Basket for Breast Tissue

Technical Details: (W / L / H): 500x420x520 mm  
Weight: 30 kg  
Power ratings: 230 V; 50 Hz; 0.8 KW  
Article No.: 40070

### Fast fixation instrument Quick-Fix



Fast fixation instrument for small and medium tissue samples.  
Fast fixation device with integrated tissue filter and automatic suction of the formalin vapors  
On request with downstream activated carbon filter.  
The fixing time is reduced to a minimum.  
Excellent for fat tissue.  
Digital temperature control.  
Capacity: 75 cassettes.

Technical data:  
Dimensions of the device (L / W / H) 435 x 290 x 440 mm  
Weight: 22 Kg  
Power ratings: 230V, 50Hz, 0.3 KW

**Quality Made in Germany**

## Fast freezing unit Cryofix -45 °C



Instrument for fast freezing of tissue samples.

Fits all conventional cryostats.

Absolute alcohol is present in the retort up to -45°C  
The formation of ice crystals almost becomes completely avoided.  
Immediate shock freezing reduces the freezing time to a minimum.  
No danger as with liquid nitrogen.

The compact design allows installation close to your Cryostat.  
Also as an alternative to the formalin fixation in sensitive Antigens.

Technical specifications:  
WxDxH: 300x410x460mm  
Weight: 31Kg  
Power supply: 230V / 50Hz / 0.3KW  
Article No. 038001

## Incubator / slide dryer



Our smallest fits in every laboratory

Temperature: room temperature to + 70 °C  
Temperature setting: +/- 1 degree  
Built-in fan  
Actual value Display on the LCD display  
Stainless steel inner body  
2 stainless steel shelves removable / height adjustable  
Stainless steel paraffin collecting basin

Technical specifications:  
Overall dimensions: 340x345x525 mm (WxDxH)  
Internal dimensions: 230x275x325 mm (WxDxH)  
Operating voltage: 230 V / 50Hz  
Power consumption: 100 VA  
Weight: 28 kg  
Article 90002

Qualität Made in Germany



## Formalin filling device

Filling device for small or large containers



The liquid dispenser with is the optimal solution for filling formalin in containers in any pathology lab.

Due to the multiple adjustment options the desired amount can be filled in containers, from 1ml up to 1000ml is possible

### Advantages:

- Integrated exhaust system with activated carbon filter.
- Filtering by activated carbon filter plates, no granules, thereby Reduction of fine dust pollution.
- Splash-proof dosing switch
- Electronic filling control from 1ml - 1000ml.
- Stainless steel check valve with built-in filter



On request with  
a filling gun.

### Technical specifications:

Dimensions of the device (L / W / H) 300 x 220 x 160mm

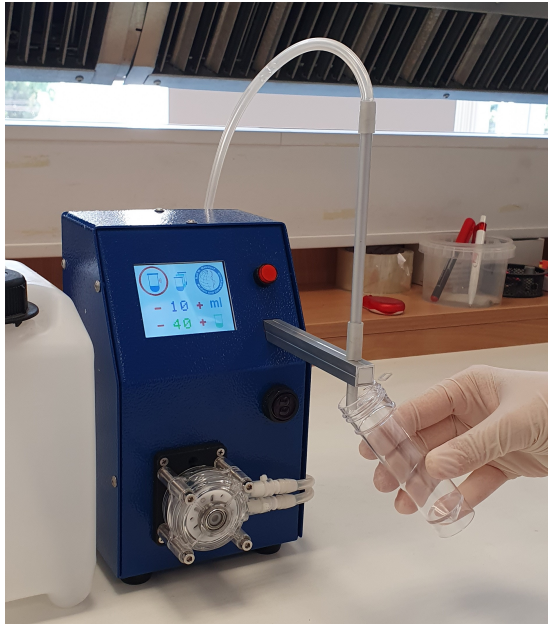
Weight: 6,5 Kg

Power requirements: 230V, 50Hz, 0,2 KW

Articlel Nr. 50010

# Formalin Filling Machine

**Formalin Filling Machine for the operation room.**



**Non-contact filling of formalin into vessels.**

The required quantity can be preset on the touch screen, a sensor recognizes the vessel and begins to fill it with the appropriate with the corresponding quantity.

The formalin is sucked out of a 5 liter (10 / 20 liter) container.

Settings: from 1ml to 10ml in 1ml steps  
from 10ml to 95ml in 5ml steps

Accuracy: +/- 2%

**Technical data:**

Dimensions of the device (W/H/D) 210 x 125 x 200mm  
weight: 1,6 Kg

Power supply: 110V / 60HZ 12V DC power supply unit

Article No. 502200

## **Formalin mixing device FormaMix**

### **Filling and mixing device for formalin and water**



**Connection to an in-house ultrapure water line or normal water pipe. Formalin with 38% is aspirated from a canister via a pump and mixed with the ultrapure water according to your requirements.**

**Technical data:**

**Dimensions of the device (W/H/D) 400 x 300 x 180mm  
without outlet tap**

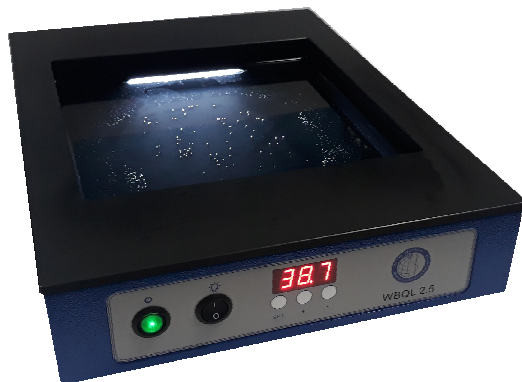
**Weight: 6,5 Kg**

**Connected load: 110V / 60HZ power supply 12V 8,5A**

**Article No. 501100**

**Qualität Made in Germany**

# Waterbath with illumination



Square water bath with built-in lighting.

Digital temperature display and control.

Storage surface for slides front and back.

Water bath: 260 x 250mm height 60mm

Outside dimensions: B320 x L440 x H90mm

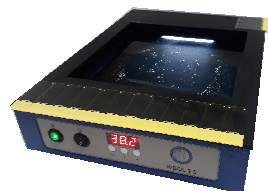
Temperature max. 60 ° C

Capacity: 2.5 liter

Weight: 5.1 Kg

Connected load: 230V / 50Hz / 500W

Article No. WBQL2.5



**Quality Made in Germany**

## Square Water Bath



Square water bath with digital display and  
microprocessor-controlled temperature control.

**Technical specifications:**

Internal dimensions: 195 x 195 x 50mm  
External dimensions: 286 x 255 x 80mm  
Weight: 3.1 kg  
Capacity: 1.8L  
Temperature max. 70 ° C  
Connection values: 230V / 50Hz / 200W  
Item no. WBQ

**Qualität Made in Germany**

## Waterbath with illumination



Square water bath with illumination  
Digital temperature display and control.  
Water bath removable.  
Only the glass pan is transported for water change.  
Cleaning the glass pan in the dishwasher.  
Side shelf for slides.  
Water bath: 210 x 210mm Height 55mm  
Overall dimensions: W310 x L355 x H170mm  
Temperature max. 60 ° C  
Power ratings: 230V / 50Hz / 200W  
Article No. WBQL

Determine the contrast by selecting the appropriate color.  
The lighting is dimmable and allows fatigue-free working.

## Water bath heated plate combination with lighting

Digital temperature display and control.  
Water bath removable

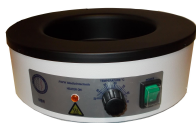


Only the glass pan is transported for water change.  
Cleaning the glass pan in the dishwasher.  
Side shelf for slides.  
Water bath: 210 x 210mm Height 55mm  
Overall dimensions: W310 x L355 x H170mm  
Temperature max. 60 ° C  
Power ratings: 230V / 50Hz / 200W

Article No. WBQL

**Quality Made in Germany**

## Waterbath round



Round water bath with extra wide edge.  
Splash-proof on / off switch.  
Heating control light.

Technical specifications:  
Internal dimensions: 200 x 60mm  
Outside dimensions: 330 x 110mm  
Weight: 2.7 kg  
Capacity: 1.7L  
Temperature max. 90 °C  
Power ratings: 230V / 50Hz / 250W  
Article No. WBR

## Heated Plate HP105



Slide drawer  
Stretching bench

Digital temperature display.  
Digital temperature control.  
Working surface only 45mm high.

Technical specifications:  
Dimensions: 550 x 180 x 45 (L x W x H)  
Working area: 155 x 450 mm.  
Working height: 45 mm  
Temperature range: 30°C - 80°C  
Power ratings: 230V / 50Hz / 300W.

Article No. HP105

## HP300

Slide drawer / Stretching bench



Digital temperature display.  
Digital temperature control.  
Work surface only 70 mm high.

Technical specifications:  
Dimensions: 300 x 180 mm (diameter x height)  
Working surface: 300mm.  
Work surface height: 70 mm  
Temperature range: 30°C – 70°C  
Connection values: 230V/50Hz/100W

Article No. HP300



## Paraffin Dispenser



### **Capacity: 15 liters**

Temperature of 20 °C - 70 °C continuously adjustable.

Outlet faucet heated.

Overheat protection.

Stainless steel lid.

Technical specifications:

Capacity: max. 15L

W / D / H: 380x420x520

Weight: 14 Kg

Power supply: 230V / 50Hz / 550W

Article No. 70010

## Histology Wax Recycling

### Paraffin Recycler

Reprocessing of with xylene and alcohol contaminated Paraffin from Tissue Processors.

Recycling of old Paraffin blocks.

15 liter capacity.

Sophisticated vacuum system down to minus 0.8 bar.

Saving of storage and disposal costs.

Integrated overheating protection.



**Almost 100% paraffin recovery through triple filtration.**



Technical specifications:

Dimensions of the device: L/W/H 500x420x520mm

Weight 30kg

230V/50Hz/800W

Article No. 60010

## Ultraschall Entkalkung



Sowohl in der Pathologie als auch im Analyselabor ist Ultraschall heute ein fester Bestandteil, wenn es um eine schnelle Diagnostik und eine hohe Prozesseffektivität geht. Das moderne Gerät vereint jetzt die prozessbeschleunigende Wirkung des Ultraschalls mit einer gleichzeitigen Kühlung der Proben.

Bei der histologischen Befundung von Proben, z. B. im Bereich der Onkologie, ist die Knochenentkalkung ein wichtiger Prozessschritt, denn nur entkalkte Proben lassen sich artefaktfrei für die spätere Diagnose aufbereiten. Der bisher langwierige Prozess kann jetzt gegenüber herkömmlichen Verfahren durch Ultraschall deutlich beschleunigt werden. Gleichzeitig bleibt die morphologische Struktur der Proben durch die integrierte Kühlung erhalten. Ein minderwertiges Präparat und – damit verbunden – eine erschwerte oder unmögliche Diagnose werden so vermieden. Der Befund steht schneller zur Verfügung.

In Analyselaboren kann mit diesem Gerät die katalytische Wirkung des Ultraschalls jetzt auch bei wärmeempfindlichen Proben genutzt werden. Exotherme Reaktionen bleiben durch die Kühlfunktion beherrschbar, Prozessabläufe gestalten sich schneller und effektiver.

Einstellbare Badtemperatur: 5 – 40 °C bei 20 °C Raumtemperatur

Kühlleistung: 200 W

Ultraschallleistung: 180 W

Timer: bis zu 100 h

Stromanschluss: 230V 50Hz

Artikel Nr. SC3500

**Qualität Made in Germany**

## Laboratory Fume Hood and Grossing Station

### **Bench hood for small staining machines such as E.g. Leica ST4020**

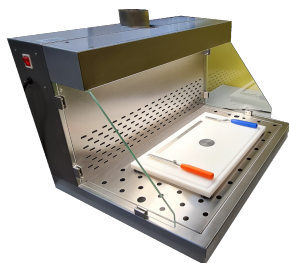


Technical specifications:  
External dimensions: 900 x 400 x 550mm H  
Completely made of stainless steel.  
Other dimensions possible on request.  
Quiet running fan recirculation mode

Power supply: 230V/50Hz/50W

Article No. ECO90

### **Extracted workplace with connection to the laboratory exhaust air.**



Consisting of:

integrated LED workplace light  
Gas baffle made of safety glass for better airflow  
Work surface made of stainless steel.

Dimensions work area:  
Width 800mm,  
Depth 600mm

Overall Dimensions:  
Width: 800mm  
Depth: 600mm  
Height: 500mm

Recommended suction power: 200-250 m3/h  
Exhaust connection DN 100

Article No. AAL80

## Autopsy saws

Cutty



length 530 mm  
height 170 mm  
release tape: 310x12x0,3 mm  
granulation D151

### Handsaws with diamond saw blade

Cut-ty Knife



length 230 mm  
height 80mm  
release tape: 130x6x0,3mm  
granulation D151

### autopsy saw



Our classic oscillating autopsy saw is available in two different versions: classic or professional with quick-change system.

Technical specifications

Voltage: 230V / 50Hz / 500W

Control: from 6,500 to 24,000 oscillations / min

Motor housing: narrow with quiet motor (52-77 dB (A))

### Cut-Grinder Primus table unit



This stationary bench grinder with fixed worktable is for Dissection of tissues, bones and composites such as metallic and / or ceramic materials has been developed.

The working method integrates the separation thin-section technique and takes into account

the specifications of leading pathologists.

For cutting, a diamond-coated, highly accurate

Separating tape used. This results in exact cuts with excellent surface quality – the prerequisite for a fast, histological

Evaluation or further processing.

Technical specifications

Voltage: 230 V / 50Hz

Belt speed: infinitely variable

Installation surface (WxD) 500 x 440 mm

External dimensions (WxD) 500 x 590 x 915mm

Cutting height max. 210 mm

### Cut Grinder: the diamond pathology saw



The cut-grinder is the world's only diamond pathology saw with a cutting height of up to 330mm! This stationary abrasive cutter with

Fixed work table has been developed for the preparation of tissue, bone and composite materials such as metallic and / or ceramic materials. It takes into account the requirements as well as wishes

leading pathologist and can also apply for the application

Separation thin-section technique can be used.

For cutting, a diamond-coated, highly accurate

Separating tape used. This results in exact cuts with excellent surface quality: the prerequisite for fast, histological evaluation or further processing.

Technical specifications

Voltage: 230/400 V 50Hz

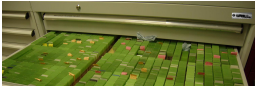
Belt speed continuously adjustable

Worktable 800x800 mm

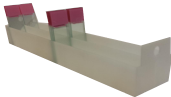
Cutting height max. 330 mm

# Slides & Paraffin Block Archives

## Drawer cabinets with central lock



Slide Trays



Paraffinblock Tray double



**A.** Storage cabinet for storage of approx. 62,000 standard specimen slides 76 x 26 mm or about 16,800 paraffin blocks with double storage  
6 full extension drawers (100% extendable) incl. Trays  
Dimensions: H x W x D 850 x 745 x 750 mm

**B.** Storage cabinet for the storage of approx. 92,880 standard slide carriers 76 x 26 mm or approximately 25,200 paraffin blocks with double storage  
9 full extension drawers (100% extendable) incl. Trays  
Dimensions: H x W x D 1225 x 745 x 750 mm

**C.** Storage cabinet for storage of approx. 148,000 standard slide carriers 76 x 26 mm or approximately 33,600 paraffin blocks with double storage  
12 full extension drawers (100% extendable) incl. Trays  
Measurements: H x W x D 1600 x 745 x 750 mm

**D.** Storage cabinet for storage of approx. 92,880 standard slide carriers 76 x 26 mm or approximately 25,200 paraffin blocks with double storage  
6 full extension drawers (100% extendable) incl. Trays  
Dimensions: H x W x D 850 x 1046 x 750 mm

**F.** Storage cabinet for the storage of approx. 139.320 standard slide carriers 76 x 26 mm or approximately 37,800 paraffin blocks with double storage  
6 full extension drawers (100% extendable) incl. Trays  
Dimensions: H x W x D 1225 x 1046 x 750 mm

**G.** Storage cabinet for storage of approx. 185.760 standard slide carriers 76 x 26 mm or approximately 50,400 paraffin blocks with double storage  
6 full extension drawers (100% extendable) incl. Trays  
Measurements: H x W x D 1600 x 1046 x 750 mm

**I.** Storage cabinet for the storage of approx. 154,000 standard slide carriers 76 x 26 mm or about 21,200 paraffin blocks with simple storage  
10 full extension drawers (100% extendable) incl. Trays  
Measurements: H x W x D 1100 x 1046 x 750 mm

### Safety:

All cabinets are lockable.

No risk of tipping, only one drawer can be opened at any time.

### Advantages:

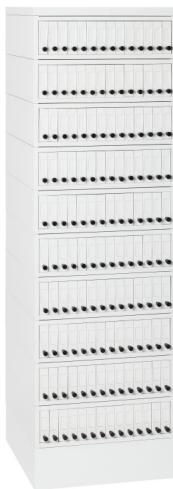
Optimum use of space, paraffin blocks are stored in trays double-storey.

It is possible to store mixed slides and paraffin blocks in a cabinet.

Delivery to the place of use and assembly by our professional staff possible.

**Qualität Made in Germany**

## Archivbox for Slides and Paraffinblocks



Metal archive box.  
With 14 drawers per box.  
For storage of slides with dimensions 26 x 76 mm.

Due to the flexible modular design, up to 14 boxes can be arranged on top of each other.

Box for microscope slides  
Dimensions: L/D/ H : 482 x 482 x 140 mm

Box for paraffin blocks  
Dimensions: L/D/ H : 482 x 482 x 70 mm

Archive box for slides  
approx. 6000 slides in 14 drawers.

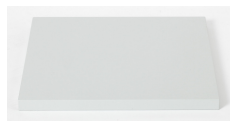
Archive box for paraffin blocks  
approx. 1000 paraffin blocks in 14 drawers.



Base



Lid





## Cold Spray - Ice Spray



**400ml cools down to -45°C**

**12pc / carton**

## Mould Release Spray



Remove paraffin blocks easily and without residue from moulds  
Our Mould Release Spray forms a well adhering, professional coating on the stainless steel molds Applicable from +250°C to -50°C. Is neutral and protective.  
Does not attack plastics

**400ml**

**12pc / carton**

## ParaClean Plus



### Paraclean PLUS

Dissolves paraffin from stainless steel surfaces, as well as from stone and tile surfaces. Paraffin Dissolver Plus is a cleaning and maintenance agent for stainless steel and all hard surfaces. The starting material is completely odorless and has been given a discreet fresh lemon scent

## Paraffin Cleaner

**220ml**



# TEAMWORK

