

Masson – Fontana*Stain for melanin***Manufacturer: Diapath S.p.A.**

Code	Test	Reagents	Code	Packaging
		Ammonia solution	G049AA	1x30 ml
		Potassium permanganate 0.5% acc. Mallory	G012AA	1x30 ml
010228	100	Sulfuric acid 0.5% Mallory	G004AA	1x30 ml
		Oxalic acid acc. Mallory	G027AA	1x30 ml
		Sodium thiosulfate 2%	G051AA	1x30 ml
		Kernechtrot (Nuclear Fast Red)	C048AA	1x30 ml

Description

The kit supplies reagents for Masson Fontana stain to show melanin in tissue. Melanin is a pigment normally present in the hair, skin, retina and some areas of the central nervous system and is showed by an argentaffin reticular fibers reaction.

Some carcinoids have argentaffins granules

Specimen and preparation kind

- Preparation: paraffin section
- Suggested fixative: formalin
- Control: skin
- Storage temperature: +4°/+8°C
- Procedure time: 12h + 35 min. with overnight incubation
- 1h 30 min. with incubation at +56°C
- Critical step: reagent temperature

Staining protocol

Drain reagents directly on section in away to cover it completely. To avoid section excessive drying, use an incubator too. Prepare 2 sections for each case: one to be used as control and one to be used with the following protocol:

1. Deparaffinize and hydrate section to distilled water
2. 5 drops **Potassium permanganate 0.5% acc. Mallory** + 5 drops **Sulfuric acid 0.5% acc. Mallory** for 30 minutes
3. Wash in distilled water
4. Cover the section with **Oxalic acid acc. Mallory** for 5 minutes

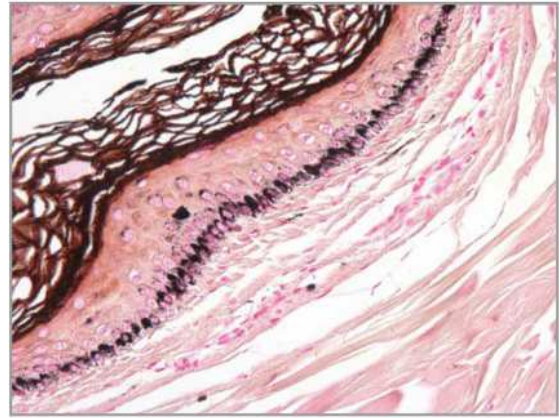
Both sections should be treated for Masson Fontana staining:

1. Deparaffinize and hydrate section to distilled water
2. Put control section and diagnosis section in an incubator box
3. Cover the sections with **Ammonia solution** overnight at room temperature (alternatively 30-40 minutes at +56°C)
4. Wash more times in distilled water
5. Cover the sections with **Sodium thiosulfate 2%** for 1-2 minutes
6. Wash more times in distilled water
7. Cover the sections with **Kernechtrot** for 5 minutes
8. Wash in distilled water
9. Dehydrate, xylene or substitutes
10. Mount with balsam

DIAPATH

Results

Melanin, argentaffine substances: Black
Nuclei: Red



The control section NOT have melanin black staining. Compared to diagnosis slide, it will be possible to identify melanin spot from aspecific staining.

WARNING: staining involves the use of alkaline solutions, which can cause section detachment from the slide. We recommend the use of positively charged slides
If incubation at 56°C is prolonged, some precipitates in section could form

Quality control

The products and the raw materials are entered and constantly monitored by computer systems that allow traceability between batch number of each single product and batches of their raw materials.

Instructions of use

To avoid mistakes, the product should be used by qualified and trained staff. Professional use product. The guidelines concerning safety on the workplace must be applied according to current regulations. The tools used for diagnosis must be suitable for diagnostic use in laboratory. The diagnosis should be performed only by authorized, trained and competent staff. Control sections should be used during each test to avoid incorrect results.

Storage

Store the product according to the specifications listed on the label. The product, if opportunely stored and integrally packed, is stable up to the expiry date reported on the label. Do not use after expiration date.

If the reagent is not stored as recommended, its performance may change and must be validated by the user. After opening, the reagent is stable up to expiration date but only if stored in its container and in accordance with the specifications listed on the label. It is recommended to close the container tightly after the use.

Disposal instruction

The expired and/or unused product must be disposed according to local waste regulations, based on danger classification on the label and after possible contaminations evaluation. In some cases it may be necessary an analytical evaluation to determine the correct waste classification and the danger features.

Labeling legend



Batch n.



Manufacturer



Storage temperature limits



Product code



Expiry date



In vitro diagnostic medical device



Photosensitive

For more information see the MSDS.