

Feulgen – Rossenbeck*Staining kit to highlight DNA***Manufacturer: Diapath S.p.A.**

Code	Tests	Reagents	Code	Packaging
		Hydrochloric Acid 5N	G033AA	1x30 ml
		Schiff reagent acc. Hotchkiss-McManus	C062AA	1x30 ml
010219	100	Metabisolphite Potassium 3%	G035AA	1x30 ml
		Hydrochloric Acid 2,7%	G034AA	1x30 ml

Description

The kit supplies the reagents necessary to show DNA with Schiff reagent according to Feulgen and Rossenbeck. The specimen is treated with hydrochloric acid which removes the bases and make available aldehyde groups to Schiff reagent. This reaction is specific for nuclear DNA.

Specimen and preparation kind

- Preparation: Paraffin section
- Suggested fixative: Formalin
- Control: Unknown control tissue
- Storage temperature: +4°/+8°C
- Procedure time: 25 min
- Critical step: Do not use acid fixatives

Staining Protocol

Drain reagents directly on section in a way to cover it completely

1. Deparaffinize and hydrate to distilled water
2. **Hydrochloric Acid 5N** for 10 minutes
3. Lavare le sezioni in acqua distillata
4. **Schiff reagent** for 10 minutes
5. Drain reagent in excess and go to the next step without washing the section
6. **Metabisolphite Potassium 3%** for 2 minutes
7. Drain reagent in excess and go to the next step without washing the section
8. **Hydrochloric Acid 2.7%** for 3 minutes
9. Wash in running tap water
10. Dehydrate and clear
11. Mount in balsam

Warning: Depending on fixative used, hydrolysis time is subjected to changes. Do not use Bouin fixative.

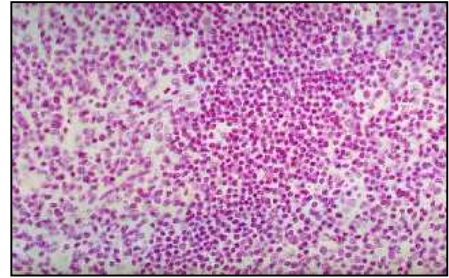
Warning: If treatment with Hydrochloric Acid is too long, it may cause the complete DNA hydrolysis with consequent reduction of reaction sensitivity and appearance of possible false negatives.

Warning: Schiff Reagent is stored at 4-8°C and it must be leave at room temperature for at least 10 minutes before the use.

DIA PATH

Results

DNA: Red magenta



Quality control

The products and the raw materials are entered and constantly monitored by computer systems that allow traceability between batch number of each single product and batches of their raw materials.

Instructions of use

To avoid mistakes, the product should be used by qualified and trained staff. Professional use product. The guidelines concerning safety on the workplace must be applied according to current regulations. The tools used for diagnosis must be suitable for diagnostic use in laboratory. The diagnosis should be performed only by authorized, trained and competent staff. Control sections should be used during each test to avoid incorrect results.

Storage

Store the product according to the specifications listed on the label. The product, if opportunely stored and integrally packed, is stable up to the expiry date reported on the label. Do not use after expiration date.

If the reagent is not stored as recommended, its performance may change and must be validated by the user. After opening, the reagent is stable up to expiration date but only if stored in its container and in accordance with the specifications listed on the label. It is recommended to close the container tightly after the use.

Disposal instruction

The expired and/or unused product must be disposed according to local waste regulations, based on danger classification on the label and after possible contaminations evaluation. In some cases it may be necessary an analytical evaluation to determine the correct waste classification and the danger features.

Labeling legend



Batch n.



Manufacturer



Storage temperature limits



Product code



Expiry date



In vitro diagnostic medical device



Photosensitive

For more information see the MSDS.