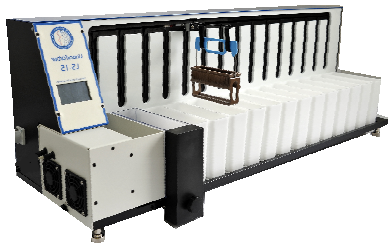
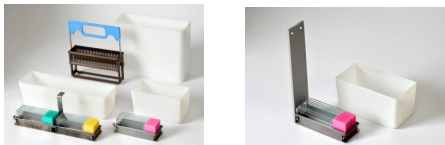


Tissue Stainer LS 15 For standard and special staining



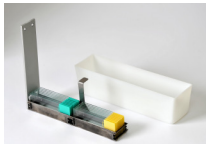
Compact tissue stainer with 15 cuvettes.
 Very small footprint, only 100cm wide.
 Up to 20 programs freely selectable.
 Optional with heat / drying unit.
 Optional with fresh water flow cuvette.
 Agitation adjustable.
 Optionally built-in activated carbon filter or connection to an existing exhaust air system.



Adaptable to almost all automatic cover slippers.

Different cuvette sizes possible.

Slide holder for 8/16/20/30 slides.



Technical specifications:

Dimensions: W x D x H: 100 x 32 x 34cm

Weight: 32 Kg

Power consumption: 230V / 50Hz / 0,3KW

Article 15000

Quality Made in Germany



Linear Multistainer SS 30

Different stainings with up to five baskets possible at the same time.



Routine and special dyes, which you have done so far by hand, can be easily automated with this device.

Characteristics of the device:

Perform several dyeings simultaneously

Up to 30 slides per basket

Programs: Up to 20, with up to 50 steps

Immersion time: From 1 s to 59 min.

Number of stations: 20

Water stations: maximum 3

Volume of cuvettes: 300 ml

Loading stations: Maximum 2

Unloading stations: Maximum 3

Ventilation: with activated carbon filter

Adaptable to almost all automatic cover slippers

Size: 1200 x 440 x 368 mm (LxWxH)

Weight: 65 Kg

Connections: 230V / 50Hz

Article No. RWSS30

Quality Made in EU