

**Sirius Red for amyloid***Kit to highlight amyloid***Manufacturer: Diapath S.p.A.****Use**

Reagents for in vitro diagnostic use

Code	Test	Reagents	Code	Packaging
		Mayer hematoxylin	C030AA	1x30 ml
010306	100	Alcoholic buffer	G091AA	1x30 ml
		Sirius red	C119AA	1x30 ml

**Description**

The kit supplies reagents of Red Sirius stain to highlight amyloid.

**Specimen and preparation kind**

- Preparation: paraffin section
- Suggested fixative: formalin
- Control: positive case for amyloid
- Storage temperature: +15°/+25°C
- Procedure time: 1 h 25 min
- Critical step: none

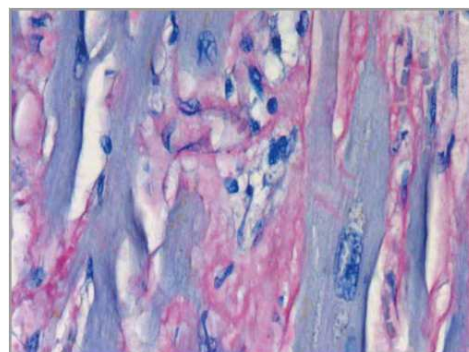
**Staining protocol**

Drain reagents directly on section in a way to cover it completely.  
To avoid section excessive drying, use an incubator box

1. Deparaffinize and hydrate to distilled water
2. Cover the sections with **Mayer hematoxylin** for 3 minutes
3. Wash in running tap water for 5 minutes
4. Cover the sections with **Alcoholic Buffer** for 30 seconds
5. Wash in running tap water for 1 minute
6. Cover the sections with **Sirius Red** for 60 minutes
7. Wash in running tap water for 10 minutes
8. 2 quick steps in absolute ethyl alcohol
9. Dehydrate quickly, clear and mount with balsam

**Results**

Nuclei: Blue  
Amyloid: different shades of Red

**Quality control**

The products and the raw materials are entered and constantly monitored by computer systems that allow traceability between batch number of each single product and batches of their raw materials.

**Instructions of use**

To avoid mistakes, the product should be used by qualified and trained staff. Professional use product. The guidelines concerning safety on the workplace must be applied according to current regulations. The tools used for diagnosis must be suitable for diagnostic use in laboratory. The diagnosis should be performed only by authorized, trained and competent staff. Control sections should be used during each test to avoid incorrect results.

**Storage**

Store the product according to the specifications listed on the label. The product, if opportunely stored and integrally packed, is stable up to the expiry date reported on the label. Do not use after expiration date.

If the reagent is not stored as recommended, its performance may change and must be validated by the user. After opening, the reagent is stable up to expiration date but only if stored in its container and in accordance with the specifications listed on the label. It is recommended to close the container tightly after the use.

**Disposal instruction**

The expired and/or unused product must be disposed according to local waste regulations, based on danger classification on the label and after possible contaminations evaluation. In some cases it may be necessary an analytical evaluation to determine the correct waste classification and the danger features.

**Labeling legend**

Batch n.



Manufacturer



Storage temperature limits



Product code



Expiry date



In vitro diagnostic medical device



Photosensitive

For more information see the MSDS.