

**Gomori trichrome***Kit for the analysis of frozen muscular tissue***Manufacturer: Diapath S.p.A.****Use**

Reagent for in vitro diagnostic use

Code	Test	Reagents	Code	Packaging
		Mayer hematoxylin	C030AA	1x30ml
010302	100	Gomori Stain	C118AA	1x30ml
		Hydrochloric acid 50%	G045AB	1x30ml
		Buffer Gomori	G090AA	1x30ml

**Description**

The kit supplies stains for Gomori trichrome on frozen sections

**Specimen and preparation kind**

- Preparation: cryostat section
- Suggested fixative: non foreseen
- Control: Muscle
- Storage temperature: +15°/+25°C
- Procedure time: 15 min
- Critical step: Non suitable for tissue embedded in paraffin

**Staining protocol**

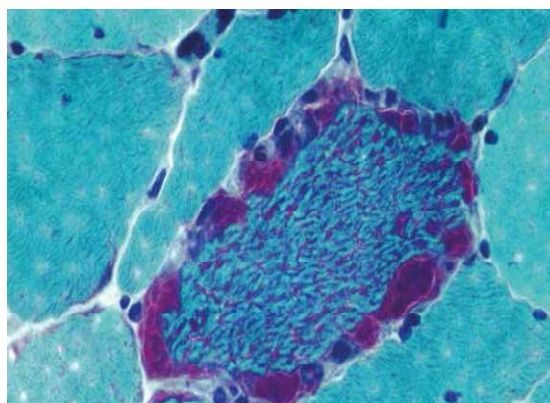
Drain reagents directly on section in a way to cover it completely.

1. Hydrate sections to distilled water
2. Dip into **Mayer Hematoxylin** for 45 seconds
3. Wash in running water to nuclei color change
4. Wash in distilled water for 30 seconds
5. Dip in **Gomori Stain** for 10 minutes
6. Wash in distilled water
7. Dip in **Hydrochloric acid 50%** for 15 seconds
8. Drip the slide and without washing go to the next step
9. Dip into **Buffer Gomori** for 20 seconds
10. Wash in distilled water
11. Dehydrate quickly, clear and mount with balsam

## Results

Myofibrils:	Green*
Intermyofibrillar material:	Red
Connective tissue:	Bright green
Nuclei:	Blue

(\* ) if the tissue is treated with formalin, the muscle is red instead green.



## Quality control

The products and the raw materials are entered and constantly monitored by computer systems that allow traceability between batch number of each single product and batches of their raw materials.

## Instructions of use

To avoid mistakes, the product should be used by qualified and trained staff. Professional use product. The guidelines concerning safety on the workplace must be applied according to current regulations. The tools used for diagnosis must be suitable for diagnostic use in laboratory. The diagnosis should be performed only by authorized, trained and competent staff. Control sections should be used during each test to avoid incorrect results.

## Storage








Store the product according to the specifications listed on the label. The product, if opportunely stored and integrally packed, is stable up to the expiry date reported on the label. Do not use after expiration date.

If the reagent is not stored as recommended, its performance may change and must be validated by the user. After opening, the reagent is stable up to expiration date but only if stored in its container and in accordance with the specifications listed on the label. It is recommended to close the container tightly after the use.

## Disposal instruction

The expired and/or unused product must be disposed according to local waste regulations, based on danger classification on the label and after possible contaminations evaluation. In some cases it may be necessary an analytical evaluation to determine the correct waste classification and the danger features.

## Labeling legend

 Batch n.	 Manufacturer	 Storage temperature limits
 Product code	 Expiry date	 In vitro diagnostic medical device
 Photosensitive		

For more information see the MSDS.