

Alcian yellow-toluidine blue*Kit to highlight Helicobacter Pylori on gastric tissue***Manufacturer: Diapath S.p.A.****Use**

Reagents for diagnostic use in vitro

Code	Tests	Reagents	Code	Packaging
010269	100	Periodic Acid 1%	G016AA	1x30 ml
		Potassium Metabisulfite 5%	G085AA	1x30 ml
		Alcian yellow 0.1%	C116AA	1x30 ml
		Toluidine blue	C117AA	1x30 ml

Description

The kit supplies reagents to highlight the *Helicobacter Pylori* on gastric tissue. Alcian yellow-toluidine blue stain can be used instead Giemsa stain because of bacteria are particularly visible on the yellow background of gastric mucins.

Specimen and preparation kind

- Preparation: Paraffin section
- Suggested fixative: Formalin
- Control: Stomach (recorded case of Helicobacter pylori)
- Storage temperature: +15°/+25°C
- Procedure time: 35 min

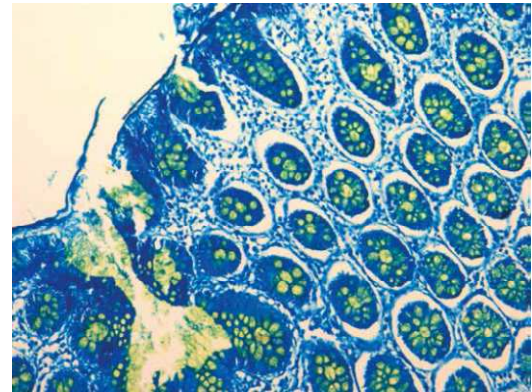
Staining Protocol

Drain reagents directly on section in a way to cover it completely
To avoid section excessive drying, use an incubator wet box

1. Deparaffinize and hydrate section to distilled water
2. Dip in **Periodic Acid 1%** for 10 minutes
3. Wash in distilled water
4. Dip in **Potassium Metabisulfite 5%** for 5 minutes
5. Wash in running tap water
6. Dip in **Alcian Yellow 0.1%** for 15 minutes
7. Wash in running tap water
8. Dip in **Toluidine Blue** for 5 minutes
9. Wash in running tap water
10. Dehydrate, clear and mount with balsam

Results

- *Helicobacter Pylori*: Dark Blue
- Mucins: Yellow
- Surrounding tissue: Light Blue



Quality control

The products and the raw materials are entered and constantly monitored by computer systems that allow traceability between batch number of each single product and batches of their raw materials.

Instructions of use

To avoid mistakes, the product should be used by qualified and trained staff. Professional use product. The guidelines concerning safety on the workplace must be applied according to current regulations. The tools used for diagnosis must be suitable for diagnostic use in laboratory. The diagnosis should be performed only by authorized, trained and competent staff. Control sections should be used during each test to avoid incorrect results.

Storage






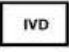

Store the product according to the specifications listed on the label. The product, if opportunely stored and integrally packed, is stable up to the expiry date reported on the label. Do not use after expiration date.

If the reagent is not stored as recommended, its performance may change and must be validated by the user. After opening, the reagent is stable up to expiration date but only if stored in its container and in accordance with the specifications listed on the label. It is recommended to close the container tightly after the use.

Disposal instruction

The expired and/or unused product must be disposed according to local waste regulations, based on danger classification on the label and after possible contaminations evaluation. In some cases it may be necessary an analytical evaluation to determine the correct waste classification and the danger features.

Labeling legend

 LOT	Batch n.	 Manufacturer	 Storage temperature limits
 REF	Product code	 Expiry date	 In vitro diagnostic medical device
 Photosensitive			

For more information see the MSDS.