

**Fast Quick Hematoxylin Eosin***Hematoxylin eosin stain for frozen section***Manufacturer: Diapath S.p.A.****Use**

Reagents for diagnostic use in vitro

Code	Test	Reagents	Code	Packaging
010263	100	Gill III Hematoxylin	C027AA	2x75 ml
		Activation Buffer	G084AA	2x30 ml
		Eosin G or Y 0.5% alcoholic	C035AA	2x75 ml

**Description**

The kit supplies reagents for the fast Hematoxylin-Eosin fast stain on frozen section

**Specimen and preparation kind**

- Preparation: Cryostat section
- Suggested fixative: Non-foreseen
- Control: Any tissue
- Storage temperature: +15°/+25°C
- Procedure time: 5 min
- Critical step: Avoid slide drying

**Staining Protocol**

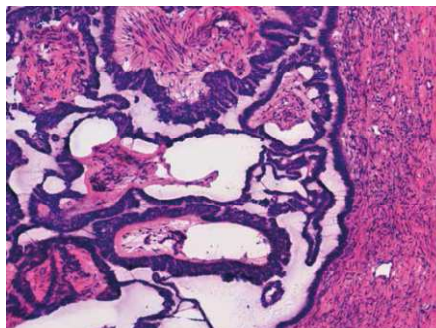
Pour reagents in histology jars and immerse slides

1. Prepare the toning solution: 10 drops of **Activation buffer** in 100 ml of distilled water
2. Dip into **Gill III Hematoxylin** for 50 seconds
3. Wash the slide in a bowl with distilled water or spring water
4. Dip the slide into the solution (step 1): 5 quick immersions
5. Dip into **Eosin G or Y 0.5% alcoholic** for 30 seconds
6. 5 quick immersions in ethyl alcohol 95°
7. 5 quick immersions in absolute ethyl alcohol
8. Clarify and mount in balsam

**Warning:** **Activation buffer** and **Eosin G o Y 0.5% Alcoholic** are re-usable and they don't need filtration

## Results

Cytoplasm: Pink-Orange  
Nuclei: Blue-Violet



## Quality control

The products and the raw materials are entered and constantly monitored by computer systems that allow traceability between batch number of each single product and batches of their raw materials.

## Instructions of use

To avoid mistakes, the product should be used by qualified and trained staff. Professional use product. The guidelines concerning safety on the workplace must be applied according to current regulations. The tools used for diagnosis must be suitable for diagnostic use in laboratory. The diagnosis should be performed only by authorized, trained and competent staff. Control sections should be used during each test to avoid incorrect results.

## Storage






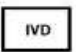

Store the product according to the specifications listed on the label. The product, if opportunely stored and integrally packed, is stable up to the expiry date reported on the label. Do not use after expiration date.

If the reagent is not stored as recommended, its performance may change and must be validated by the user. After opening, the reagent is stable up to expiration date but only if stored in its container and in accordance with the specifications listed on the label. It is recommended to close the container tightly after the use.

## Disposal instruction

The expired and/or unused product must be disposed according to local waste regulations, based on danger classification on the label and after possible contaminations evaluation. In some cases it may be necessary an analytical evaluation to determine the correct waste classification and the danger features.

## Labeling legend

 Batch n.	 Manufacturer	 Storage temperature limits
 Product code	 Expiry date	 In vitro diagnostic medical device
 Photosensitive		

For more information see the MSDS.