

Fast Quick – M.G.G. rapid*Kit for fast staining of blood smears***Manufacturer: Diapath S.p.A.****Use**

Reagents for diagnostic use in vitro

Code	Test	Reagents	Code	Packaging
		Fixative	P026AA	2x75 ml
010253	100	Eosin	C105AA	2x75 ml
		Thiazine stain	C106AA	2x75 ml

Description

The kit supplies reagents for the fast stain of blood smears to visualize the different kind of blood cells.

Specimen and preparation kind

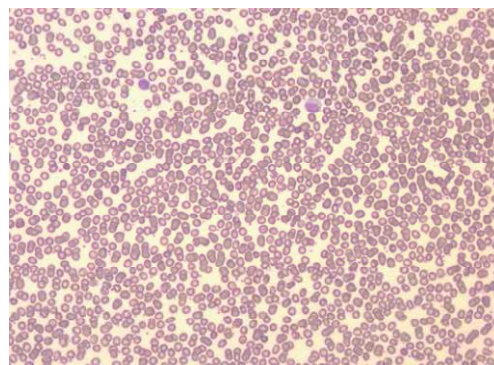
- Preparation: Blood smear
- Suggested fixative: Air
- Control: Blood smear
- Storage temperature: +15°/+25°C
- Procedure time: 20 seconds
- Critical step: pH water used after washing

Staining protocol

1. Dry the smear in the air
2. Dip the slide for 5 times into the **fixative** (1 second for each dip). Drip reagent excess
3. Dip the slide for 5 times into the **Eosin** (1 second for each dip). Drip reagent excess
4. Dip the slide for 3-5 times into **Thiazine stain** (1 second for each dip). Drip reagent excess
5. Wash in spring water (Water pH near to neutrality)
6. Dry in the air (do not use heat sources, ovens or plates)
7. Clear and mount

Results

- Nuclei: Violaceous Red, Pink
- Basophil cytoplasm: From light Blue to dark Blue
- Acidophil cytoplasm: From light to rosy Red
- Polichromatophlic cytoplasm: From grayish to violaceous
- Acidophil Granules: Orange
- Neutrophil Granules: Brown – Dark Pink
- Basophil Granules: Dark violet
- Azurophil Granules: From Purple to Purple violet



Quality control

The products and the raw materials are entered and constantly monitored by computer systems that allow traceability between batch number of each single product and batches of their raw materials.

Instructions of use

To avoid mistakes, the product should be used by qualified and trained staff. Professional use product. The guidelines concerning safety on the workplace must be applied according to current regulations. The tools used for diagnosis must be suitable for diagnostic use in laboratory. The diagnosis should be performed only by authorized, trained and competent staff. Control sections should be used during each test to avoid incorrect results.

Storage






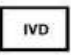

Store the product according to the specifications listed on the label. The product, if opportunely stored and integrally packed, is stable up to the expiry date reported on the label. Do not use after expiration date.

If the reagent is not stored as recommended, its performance may change and must be validated by the user. After opening, the reagent is stable up to expiration date but only if stored in its container and in accordance with the specifications listed on the label. It is recommended to close the container tightly after the use.

Disposal instruction

The expired and/or unused product must be disposed according to local waste regulations, based on danger classification on the label and after possible contaminations evaluation. In some cases it may be necessary an analytical evaluation to determine the correct waste classification and the danger features.

Labeling legend

 LOT	Batch n.	 Manufacturer	 Storage temperature limits
 REF	Product code	 Expiry date	 In vitro diagnostic medical device
 Photosensitive			

For more information see the MSDS.