

## Rhodanine

*Protocol for staining of copper on hepatic tissue*



**Manufacturer: Diapath S.p.A.**

### Use

Reagents for in vitro diagnostic use

Code	Test	Reagents	Code	Packaging
		Acetate sodium	G073AA	1x30 ml
010248	100	10% neutral buffered formalin	F004AA	1x30 ml
		Rhodanine	C104AA	2x30 ml
		Mayer Hematoxylin	C030AA	1x30 ml

### Description

The kit is designed for demonstrating copper by using rhodanine in hepatic tissue sections.

### Specimen and preparation kind

- Preparation: paraffin section
- Suggested fixative: formalin
- Control: fetal liver
- Storage temperature: +15°/+25°C
- Procedure time: 20 h
- Critical step: reagent temperature

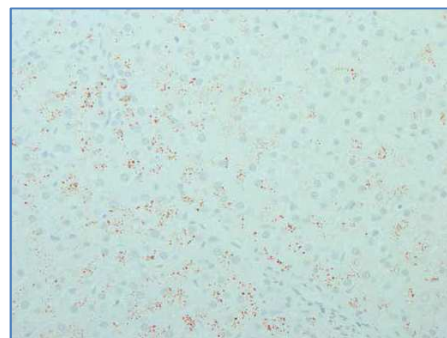
### Staining protocol

Drain reagents directly on section in a way to cover it completely.  
To avoid section excessive drying, use an incubator box.

1. Deparaffinize and hydrate to distilled water
2. Prepare washing buffer solution: 40 ml of distilled water + 10 drops of **Acetate sodium** + 10 drops of **10% neutral buffered formalin**
3. Prepare rhodanine solution: 20 drops of **Rhodanine** in 40 ml of distilled water
4. Immerse slides in rhodanine solution (step 3) for 20 hours at +37°C
5. Wash section in buffer solution (step 2)
6. **Mayer Hematoxylin** for 5 minutes
7. Wash section in buffer solution (step 2): 3 washings of 1 minute each
8. Dehydrate quickly, clear and mount with balsam

## Results

Copper: Brown - Red  
Nucleus: Blue – Violet



## Quality control

The products and the raw materials are entered and constantly monitored by computer systems that allow traceability between batch number of each single product and batches of their raw materials.

## Instructions of use

To avoid mistakes, the product should be used by qualified and trained staff. Professional use product. The guidelines concerning safety on the workplace must be applied according to current regulations. The tools used for diagnosis must be suitable for diagnostic use in laboratory. The diagnosis should be performed only by authorized, trained and competent staff. Control sections should be used during each test to avoid incorrect results.

## Storage

Store the product according to the specifications listed on the label. The product, if opportunely stored and integrally packed, is stable up to the expiry date reported on the label. Do not use after expiration date.

If the reagent is not stored as recommended, its performance may change and must be validated by the user. After opening, the reagent is stable up to expiration date but only if stored in its container and in accordance with the specifications listed on the label. It is recommended to close the container tightly after the use.

## Disposal instruction

The expired and/or unused product must be disposed according to local waste regulations, based on danger classification on the label and after possible contaminations evaluation. In some cases it may be necessary an analytical evaluation to determine the correct waste classification and the danger features.

## Labeling legend



Batch n.



Manufacturer



Storage temperature limits



Product code



Expiry date



In vitro diagnostic medical device



Photosensitive

For more information see the MSDS.