

Van Gieson trichrome acc. Weigert

Kit to highlight connective tissue

Manufacturer: Diapath S.p.A.

Use

Reagents for diagnostic use in vitro

Code	Test	Reagents	Code	Packaging
		Iron hematoxylin acc. Weigert-reagent A	C022AA	1X30 ml
010240	100	Iron hematoxylin acc. Weigert - reagent B	C023AA	1X30 ml
		Picrofuchsin acc. Van Gieson	C060AA	1X30 ml

Description

The kit supplies reagents for Van Gieson trichrome stain to highlight connective tissue.

The connective tissue is highlighted with picrofuchsin, a solution obtained by mixing two stains: acid fuchsin, made by big molecules that penetrate and highlight collagen fibers, and picric acid, made by small molecules for the staining of collagen and muscle fibers, cytoplasm and erythrocytes. Nuclei counterstaining by Hematoxylin acc. Weigert.

Specimen and preparation kind

- Preparation: paraffin section
- Suggested fixative: formalin
- Control: Intestine, liver
- Storage temperature: +15°/+25°C
- Procedure time: 35 min
- Critical step: Do not wash in water after Picrofuchsin

Staining protocol

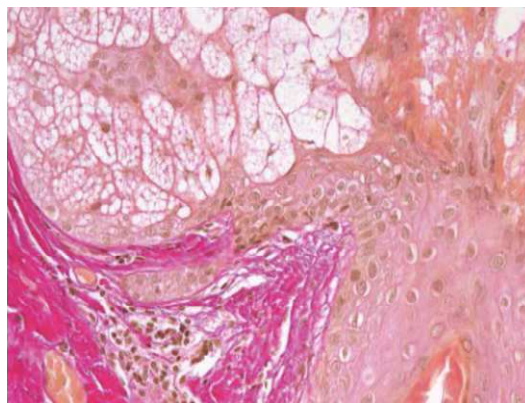
Drain reagents directly on section in a way to cover it completely

To avoid section excessive drying, use an incubator wet box

1. Deparaffinize and hydrate to distilled water
2. Cover the sections with 5 drops of **Iron hematoxylin acc. Weigert-reagent A** and 5 drops of **Iron hematoxylin acc. Weigert-reagent B** for 10 minutes
3. Wash in running tap water for 10 minutes
4. Cover the sections with **Picrofuchsin acc. Van Gieson** for 10 minutes
5. Dehydrate quickly, clear and mount with balsam

Results

Nuclei:	Black
Collagen:	Red
Cytoplasm, muscle, corneum stratum of the epithelium, erythrocytes :	Yellow

**Quality control**

The products and the raw materials are entered and constantly monitored by computer systems that allow traceability between batch number of each single product and batches of their raw materials.

Instructions of use

To avoid mistakes, the product should be used by qualified and trained staff. Professional use product. The guidelines concerning safety on the workplace must be applied according to current regulations. The tools used for diagnosis must be suitable for diagnostic use in laboratory. The diagnosis should be performed only by authorized, trained and competent staff. Control sections should be used during each test to avoid incorrect results.

Storage

Store the product according to the specifications listed on the label. The product, if opportunely stored and integrally packed, is stable up to the expiry date reported on the label. Do not use after expiration date.

If the reagent is not stored as recommended, its performance may change and must be validated by the user. After opening, the reagent is stable up to expiration date but only if stored in its container and in accordance with the specifications listed on the label. It is recommended to close the container tightly after the use.

Disposal instruction

The expired and/or unused product must be disposed according to local waste regulations, based on danger classification on the label and after possible contaminations evaluation. In some cases it may be necessary an analytical evaluation to determine the correct waste classification and the danger features.

Labeling legend

Batch n.



Manufacturer



Storage temperature limits



Product code



Expiry date



In vitro diagnostic medical device



Photosensitive

For more information see the MSDS.