

Picromallory trichrome

Stain for connective tissue

Manufacturer: Diapath S.p.A.

Code	Test	Reagents	Code	Packaging
		Iron Hematoxylin acc. Weigert - Reagent A	C022AA	1x30 ml
		Iron Hematoxylin acc. Weigert - Reagent B	C023AA	1x30 ml
010238	100	Picromallory mixture	G075AA	1x30 ml
		Fuchsin Ponceau acc. Masson	C044AA	1x30 ml
		Phosphomolybdic Acid 2%	G065AA	1x30 ml
		Blue Aniline acc. Masson	C009AA	1x30 ml

Description

The Kit is designed for demonstrating the different components of connective tissue. The different components of connective tissue show a different affinity to reagents used in this staining protocol.

Specimen and preparation kind

- Preparation: Paraffin section
- Suggested fixative: Formalin
- Control: Connective tissue
- Storage temperature: +15°/+25°C
- Procedure time: 45 min
- Critical step: None

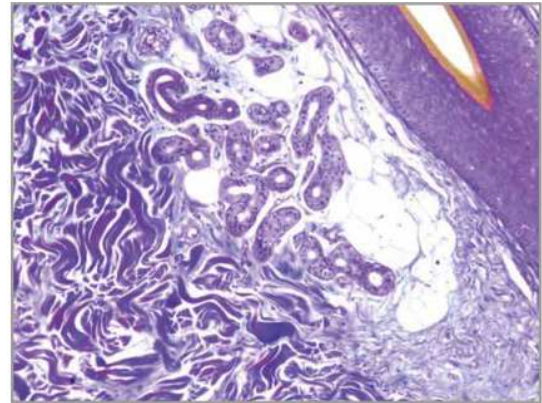
Staining protocol

Drain reagents directly on section in a way to cover it completely.
To avoid section excessive drying, use an incubator wet box

1. Deparaffinize and hydrate to distilled water
2. Cover the section with 5 drops of **Iron Hematoxylin acc. Weigert - Reagent A** and 5 drops of **Iron Hematoxylin acc. Weigert - Reagent B** for 10 minutes
3. Wash in running tap water for 10 minutes
4. Cover the section with **Picromallory mixture** for 2 minutes
5. Wash in distilled water
6. Cover the section with **Fuchsin Ponceau acc. Masson** for 1 minutes
7. Wash in distilled water
8. Cover the section with **Phosphomolybdic Acid 2%** for 15 minutes
9. Wash in distilled water
10. Cover the section with **Aniline Blue acc. Masson** for 1 minute
11. Differentiate quickly in ethyl alcohol 95°
12. Complete dehydration with absolute ethyl alcohol, xylene or substitutes. Mount with balsam.

Results

Nuclei:	Dark Brown
Collagen fibers :	Dark Blue
Ground substance of cartilage and bone, mucus, basophil granules of hypophysis and amyloid:	Different shades of blue
Neuroglia and fibroglia:	Red
Acidophil granules of hypophysis:	Orange
Myelin and erythrocytes:	Yellow
Elastic fibers:	from pale Pink to Yellow or colorless



Quality control

The products and the raw materials are entered and constantly monitored by computer systems that allow traceability between batch number of each single product and batches of their raw materials.

Instructions of use

To avoid mistakes, the product should be used by qualified and trained staff. Professional use product. The guidelines concerning safety on the workplace must be applied according to current regulations. The tools used for diagnosis must be suitable for diagnostic use in laboratory. The diagnosis should be performed only by authorized, trained and competent staff. Control sections should be used during each test to avoid incorrect results.

Storage

Store the product according to the specifications listed on the label. The product, if opportunely stored and integrally packed, is stable up to the expiry date reported on the label. Do not use after expiration date.

If the reagent is not stored as recommended, its performance may change and must be validated by the user. After opening, the reagent is stable up to expiration date but only if stored in its container and in accordance with the specifications listed on the label. It is recommended to close the container tightly after the use.

Disposal instruction

The expired and/or unused product must be disposed according to local waste regulations, based on danger classification on the label and after possible contaminations evaluation. In some cases it may be necessary an analytical evaluation to determine the correct waste classification and the danger features.

Labeling legend



Batch n.



Manufacturer



Storage temperature limits



Product code



Expiry date



In vitro diagnostic medical device



Photosensitive

For more information see the MSDS.