

**P.A.S. acc. Morel - Maronger***Stain for glycogen***Manufacturer: Diapath S.p.A.**

Code	Test	Reagents	Code	Packaging
		Periodic acid	PMT0004	2,7 gr
		Schiff reagent acc. Hotchkiss - McManus	C062AA	1x30 ml
010232	100	Metabisulfite potassium Hotchkiss - McManus	G011AA	1x30 ml
		Hydrochloric acid 10%	G047AA	1x30 ml
		Picro indigo Carmine acc. Morel-Maronger	C059AA	1x30 ml

**Description**

The kit supplies reagents for P.A.S. (Periodic acid Schiff) staining. The Schiff reagent is a watery, colorless solution, used in combination with periodic acid to visualize aldehyde groups. The P.A.S. stain is mainly used to visualize the presence of glycogen but also of glycoproteins. Many tissues may result P.A.S. positive, for example: the ground substance of connective tissues, cartilage, bones, mucous cells and glands, kidney structures, hypophysis basophil cells, thyroid colloid substance. The staining protocol acc. Morel-Maronger is characterized by staining of connective tissue with Picroindigo Carmine.

**Specimen and preparation kind**

- Preparation: paraffin section
- Suggested fixative: formalin
- Control: liver
- Storage temperature: +4°/+8°C
- Procedure time: 1 h 10 min.
- Critical step: use reagents at room temperature

**Staining protocol**

Drain reagents directly on section in a way to cover it completely.  
To avoid section excessive drying, use an incubator box.

1. Periodic acid solution: melt **Periodic acid** in 50 ml of distilled water. Stir until the complete powder melting. Store the solution at +4/+8°C in tightly close container. It has a validity of 12 months
2. Deparaffinize and hydrate to distilled water
3. Cover the section with periodic acid solution (step 1) for 20-30 minutes
4. Wash in distilled water
5. Cover the section with **Schiff reagent acc. Hotchkiss - McManus** for 15-30 minutes
6. Wash in distilled water
7. Prepare solution: 80 ml of distilled water + 10 drops of **Metabisulfite potassium** + 10 drops of **Hydrochloric Acid 10%**
8. Immerse slides in washing solution (step 7) for 5 minutes
9. Wash in distilled water
10. Cover the section with **Picro indigo Carmine** for 5 minutes
11. Wash quickly in distilled water
12. Dehydrate quickly, xylene or substitutes. Mount with balsam

**NB:** reagents are stores at +4/+8°C, we recommend to keep them at room temperature for about 10 minutes before the use. If they are used cold, the reaction speed is significantly reduced.

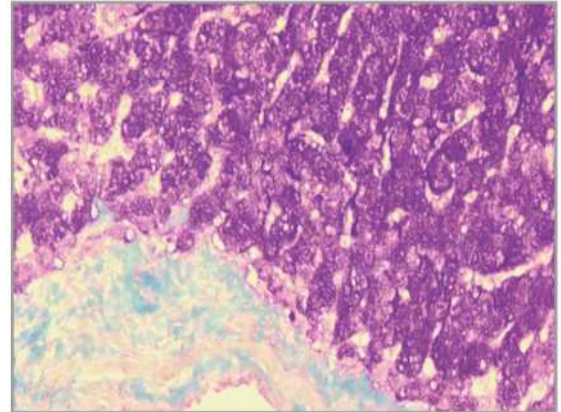
# DIAPATH

## Results

Positive P.A.S. substances (glycogen):  
Connective tissue, muscle, neuroglia,  
erythrocytes :

Magenta

Yellow - green



## Quality control

The products and the raw materials are entered and constantly monitored by computer systems that allow traceability between batch number of each single product and batches of their raw materials.

## Instructions of use

To avoid mistakes, the product should be used by qualified and trained staff. Professional use product. The guidelines concerning safety on the workplace must be applied according to current regulations. The tools used for diagnosis must be suitable for diagnostic use in laboratory. The diagnosis should be performed only by authorized, trained and competent staff. Control sections should be used during each test to avoid incorrect results.

## Storage

Store the product according to the specifications listed on the label. The product, if opportunely stored and integrally packed, is stable up to the expiry date reported on the label. Do not use after expiration date.

If the reagent is not stored as recommended, its performance may change and must be validated by the user. After opening, the reagent is stable up to expiration date but only if stored in its container and in accordance with the specifications listed on the label. It is recommended to close the container tightly after the use.

## Disposal instruction

The expired and/or unused product must be disposed according to local waste regulations, based on danger classification on the label and after possible contaminations evaluation. In some cases it may be necessary an analytical evaluation to determine the correct waste classification and the danger features.

## Labeling legend



Batch n.



Manufacturer



Storage temperature limits



Product code



Expiry date



In vitro diagnostic medical device



Photosensitive

For more information see the MSDS.