

**May Grunwald Giemsa acc. Romanowsky for sections***Staining for elements of haemolymphopoietic tissue***Manufacturer: Diapath S.p.A.**

Code	Test	Reagents	Code	Packaging
		May Grunwald acc. Pappenheim	C050AA	1x100 ml
010229	100	Giemsa acc. Pappenheim	C045AB	1x30 ml
		Acetic water	G066AA	1x30 ml

**Description**

The kit is suitable for cell typing of haemolymphopoietic tissue and to visualize parasites. It can be used during endothelial reticulum identification too.

**Specimen and preparation kind**

- Preparation: paraffin section
- Suggested fixative: formalin
- Control: Osteomidollar biopsies
- Storage temperature: +15°/+25°C
- Procedure time: 1h 5 min
- Critical step: reagent dilution

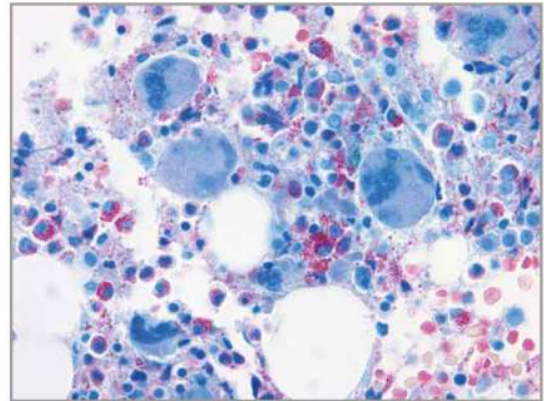
**Staining Protocol**

1. Deparaffinize and hydrate to distilled water
2. Dilute the **May Grunwald acc. Pappenheim** with distilled water with ratio 1:4
3. Cover the sections with the solution (step 2) for 20 minutes at 37°C
4. Wash in distilled water
5. Dilute 20 drops of **Giemsa acc. Pappenheim** with 10 ml of distilled water
6. Cover the sections with the solution (step 5) for 40 minutes at 37°C
7. Wash in distilled water
8. Cover the sections with **Acetic water** for 30 seconds
9. Drain the section and dry it with filter paper
10. Dehydrate with solution 1:1 of absolute ethyl alcohol and acetone
11. Xylene or substitutes
12. Mount in balsam

# DIAPATH

## Results

Nuclei: Violet  
 Basophile cytoplasm: From light Blue to dark Blue  
 Acidophil cytoplasm: From light Red to Pink



## Quality control

The products and the raw materials are entered and constantly monitored by computer systems that allow traceability between batch number of each single product and batches of their raw materials.

## Instructions of use

To avoid mistakes, the product should be used by qualified and trained staff. Professional use product. The guidelines concerning safety on the workplace must be applied according to current regulations. The tools used for diagnosis must be suitable for diagnostic use in laboratory. The diagnosis should be performed only by authorized, trained and competent staff. Control sections should be used during each test to avoid incorrect results.

## Storage





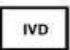

Store the product according to the specifications listed on the label. The product, if opportunely stored and integrally packed, is stable up to the expiry date reported on the label. Do not use after expiration date.

If the reagent is not stored as recommended, its performance may change and must be validated by the user. After opening, the reagent is stable up to expiration date but only if stored in its container and in accordance with the specifications listed on the label. It is recommended to close the container tightly after the use.

## Disposal instruction

The expired and/or unused product must be disposed according to local waste regulations, based on danger classification on the label and after possible contaminations evaluation. In some cases it may be necessary an analytical evaluation to determine the correct waste classification and the danger features.

## Labeling legend

 LOT	Batch n.	 Manufacturer	 Storage temperature limits
 REF	Product code	 Expiry date	 In vitro diagnostic medical device
 Photosensitive			

For more information see the MSDS.