

Mallory trichrome acc. McFarlane*Staining Kit for connective tissue***Manufacturer: Diapath S.p.A.**

Code	Tests	Reagents	Code	Packaging
		Acid Fuchsin 1%	C102AA	1x30 ml
010227	100	Phosphomolybdic Acid 2%	G065AA	1x30 ml
		Mallory mixture	C010AA	1x30 ml

Description

The kit supplies reagents for Mallory trichrome staining protocol to highlight connective tissue, with particular affinity for collagen, reticulum, cartilage, bones and amyloid.

Specimen and preparation kind

- Preparation: Paraffin section
- Suggested fixative: Formalin
- Control: Parathyroid, smooth muscle
- Storage temperature: +15°/+25°C
- Procedure time: 15 min
- Critical step: None

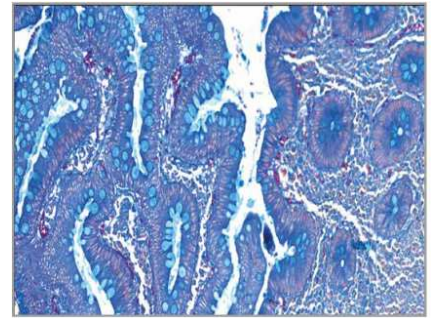
Staining protocol

Drain reagents directly on section in a way to cover it completely
To avoid section excessive drying use an incubator wet box

1. Deparaffinize and hydrate to distilled water
2. Cover the sections with **Acid Fuchsin 1%** for 5 minutes
3. Wash quickly in distilled water
4. Cover the sections with **Phosphomolybdic Acid 2%** for 3 minutes
5. Drain reagent and go to the next step
6. Cover the sections with **Mallory mixture** for 5 minutes
7. Differentiate some seconds in ethyl alcohol 95°
8. Complete the dehydration in absolute ethyl alcohol
9. Xylen or substitutes. Mount in balsam

Results

Collagen Fibers:	Dark Blue
Cartilage, bones, basophile granules of hypophysis cells and hamyloid:	Varying shade of Blue
Nuclei, neuroglia fibrils, axones and fibrin:	Red
Granules of acidophilic hypophysis cells:	Orange
Herythrocytes, myelin and nucleoli:	Yellow
Elastic Fibers:	from pale pink to yellow or colorless
Smooth muscle:	Violet

**Quality control**

The products and the raw materials are entered and constantly monitored by computer systems that allow traceability between batch number of each single product and batches of their raw materials.

Instructions of use

To avoid mistakes, the product should be used by qualified and trained staff. Professional use product. The guidelines concerning safety on the workplace must be applied according to current regulations. The tools used for diagnosis must be suitable for diagnostic use in laboratory. The diagnosis should be performed only by authorized, trained and competent staff. Control sections should be used during each test to avoid incorrect results.

Storage

Store the product according to the specifications listed on the label. The product, if opportunely stored and integrally packed, is stable up to the expiry date reported on the label. Do not use after expiration date.

If the reagent is not stored as recommended, its performance may change and must be validated by the user. After opening, the reagent is stable up to expiration date but only if stored in its container and in accordance with the specifications listed on the label. It is recommended to close the container tightly after the use.

Disposal instruction

The expired and/or unused product must be disposed according to local waste regulations, based on danger classification on the label and after possible contaminations evaluation. In some cases it may be necessary an analytical evaluation to determine the correct waste classification and the danger features.

Labeling legend

Batch n.



Manufacturer



Storage temperature limits



Product code



Expiry date



In vitro diagnostic medical device



Photosensitive

For more information see the MSDS.