

**Long Giemsa acc. Lennert***Stain for Helicobacter pylori***Manufacturer: Diapath S.p.A.**

Code	Test	Reagents	Code	Packaging
		Giemsa acc. Pappenheim	C045AA	2x125 ml
		Differentiating solution	G060AA	1x30 ml
010225	100	Alcoholic buffer	G061AA	1x75 ml
		Isowave	G062AA	1x75 ml
		Isowave	G062AA	1x75 ml

**Description**

Polychromatic stain for an optimal morphological visualization of haemolymphopoietic tissue. It is intended for use in histological visualization of blood parasites, embedding bodies and mast cells.

**Specimen and preparation kind**

- Preparation: paraffin section
- Suggested fixative: formalin
- Control: stomach (reported case of *Helicobacter pylori*)
- Storage temperature: +15°/+25°C
- Procedure time: 1h 10 min.
- Critical step: none

**Staining protocol**

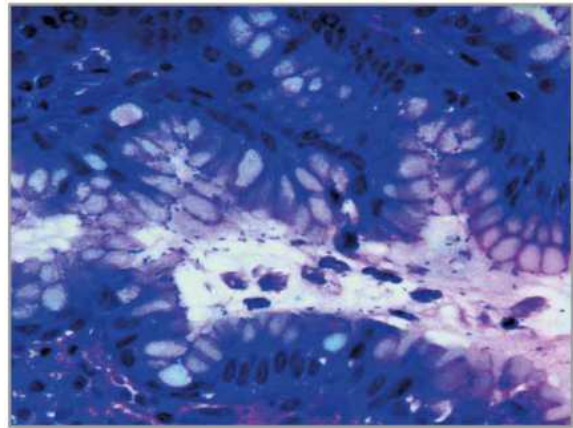
Drain reagents directly on section in a way to cover it completely.  
To avoid section excessive drying, use an incubator box.

1. Giemsa solution: 7 ml of **Giemsa acc. Pappenheim** diluted in 60 ml of distilled water
2. Deparaffinize and hydrate section to distilled water
3. Immerse slides in Giemsa working solution (see step 1) for 60 minutes
4. Wash in distilled water
5. **Differentiating solution** for 10 seconds
6. Wash in distilled water
7. Immerse slides in **Alcoholic buffer** for 5 minutes
8. **Isowave** for 2 minutes
9. **Isowave** for 2 minutes
10. Xylene or substitutes
11. Mount with balsam

# DIAPATH

## Results

Nuclei:	Blue
Bacteria and protozoan:	Dark blue
Background:	from Pink to light Blue



## Quality control

The products and the raw materials are entered and constantly monitored by computer systems that allow traceability between batch number of each single product and batches of their raw materials.

## Instructions of use

To avoid mistakes, the product should be used by qualified and trained staff. Professional use product. The guidelines concerning safety on the workplace must be applied according to current regulations. The tools used for diagnosis must be suitable for diagnostic use in laboratory. The diagnosis should be performed only by authorized, trained and competent staff. Control sections should be used during each test to avoid incorrect results.

## Storage

Store the product according to the specifications listed on the label. The product, if opportunely stored and integrally packed, is stable up to the expiry date reported on the label. Do not use after expiration date.

If the reagent is not stored as recommended, its performance may change and must be validated by the user. After opening, the reagent is stable up to expiration date but only if stored in its container and in accordance with the specifications listed on the label. It is recommended to close the container tightly after the use.

## Disposal instruction

The expired and/or unused product must be disposed according to local waste regulations, based on danger classification on the label and after possible contaminations evaluation. In some cases it may be necessary an analytical evaluation to determine the correct waste classification and the danger features.

## Labeling legend



Batch n.



Manufacturer



Storage temperature limits



Product code



Expiry date



In vitro diagnostic medical device



Photosensitive

For more information see the MSDS.