

Grocott acc. Callard*Staining for miceti***Manufacturer: Diapath S.p.A.**

Code	Tests	Reagents	Reagents code	Packaging
		Chromic acid 5%	G058AA	1x30 ml
		Potassium Metabisulfite 1%	G059AA	1x30 ml
		Silver nitrate 7%	G057AA	1x30 ml
010223	100	Methenamine 40%	G020AA	1x30 ml
		Sodium Tetraborate 5%	G041AA	1x30 ml
		Gold chloride 0.25%	G031AA	1x30 ml
		Sodium thiosulfate 2%	G051AA	1x30 ml
		Light Green 1%	C071AA	1x30 ml

Description

The kit supplies reagents for Grocott protocol to highlight fungi in tissue section; to prevent the tissue section drying, the staining protocol foresees the immersion of slides in silver-methenamine solution.

Specimen and preparation kind

- Preparation: Paraffin section
- Suggested fixatives: Formalin
- Control: Fungal infection
- Storage temperature: +4°/+8°C
- Procedure time: 1h 40 min
- Critical step: Reagent temperature. Do not use metallic objects. Wash in distilled water.

Staining protocol

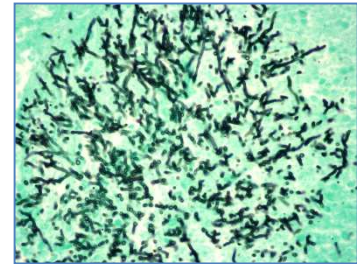
Drain reagents directly on section in a way to cover it completely.

1. Prepare the methenamine silver working solution:
15 drops of **Silver nitrate 7%** + 30 drops of **Methenamine 40%** + 20 drops of **Sodium Tetraborate 5%** + 40 ml of bidistilled water, stir with a glass stick, DO NOT use metallic objects. Heat up at 56°C.
2. Deparaffinize and hydrate to distilled water
3. **Chromic acid 5%** for 20 minutes
4. Wash in distilled water
5. **Potassium Metabisulfite 1%** for 1 minute
6. Wash in running tap water for 1 minute
7. Wash in distilled water
8. Immerse slides in the working solution (step1) and incubate at +56°C for 1 hour.
9. Control at microscope the staining degree, if necessary prolong incubation times (fungi turns dark brown on colorless background)
10. Leave slides cool at room temperature for 5 minutes. Wash in distilled water
11. Wash in distilled water
12. **Gold chloride 0.25%** for 3 minutes
13. Wash in bidistilled water
14. **Sodium thiosulfate 2%** for 5 minutes
15. Wash in distilled water
16. **Light Green 1%** for 1 minutes
17. Wash quickly in distilled water
18. Dehydrate quickly, xylel or substitutes. Mount in balsam.

DIA PATH

Results

Basal membranes, glycogen, micete capsule:	Black
Mucins e glycogen:	Grey-Black
Erythrocytes:	Yellow
Background:	Green



Quality control

The products and the raw materials are entered and constantly monitored by computer systems that allow traceability between batch number of each single product and batches of their raw materials.

Instructions of use

To avoid mistakes, the product should be used by qualified and trained staff. Professional use product. The guidelines concerning safety on the workplace must be applied according to current regulations. The tools used for diagnosis must be suitable for diagnostic use in laboratory. The diagnosis should be performed only by authorized, trained and competent staff. Control sections should be used during each test to avoid incorrect results.






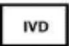

Storage

Store the product according to the specifications listed on the label. The product, if opportunely stored and integrally packed, is stable up to the expiry date reported on the label. Do not use after expiration date. If the reagent is not stored as recommended, its performance may change and must be validated by the user. After opening, the reagent is stable up to expiration date but only if stored in its container and in accordance with the specifications listed on the label. It is recommended to close the container tightly after the use.

Disposal instruction

The expired and/or unused product must be disposed according to local waste regulations, based on danger classification on the label and after possible contaminations evaluation. In some cases it may be necessary an analytical evaluation to determine the correct waste classification and the danger features.

Labeling legend

 Batch n.	 Manufacturer	 Storage temperature limits
 Product code	 Expiry date	 In vitro diagnostic medical device
 Photosensitive		

For more information see the MSDS.