

Gram*Stain for bacteria***Manufacturer: Diapath S.p.A.**

Code	Test	Reagents	Code	Packaging
		Mayer hematoxylin	C030AA	1x30 ml
		Floxin B acc. Gram	C039AA	1x75 ml
010221	100	Crystal violet acc. Gram-Weigert	C017AA	1x30 ml
		Iodine solution acc. Gram	G008AA	1x30 ml
		Xylene-aniline acc. Gram	X004AA	1x75 ml
		Xylene-aniline acc. Gram	X004AA	1x75 ml

Description

The kit supplies reagents to visualize Gram + and Gram - bacteria.

Specimen and preparation kind

- Preparation: paraffin section
- Suggested fixative: formalin
- Control: tissue with reported Gram+ infection
- Storage temperature: +15°/+25°C
- Procedure time: 40 min
- Critical step: reagent temperature

Staining protocol

For histological specimens embedded in paraffin and cytological specimens fixed with spray, start from step 1.

For cytological specimens fixed by heat or air, start from step 2

Drain reagents directly on section.

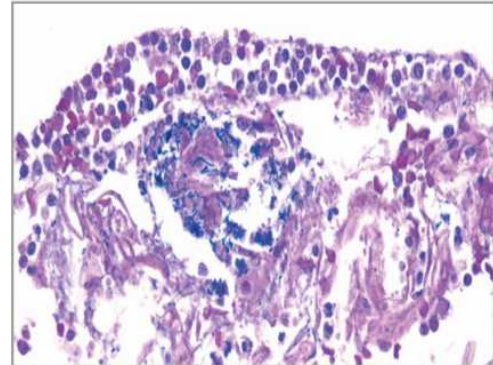
To avoid section excessive drying, use an incubator box.

1. Deparaffinize and hydrate section to distilled water
2. **Mayer hematoxylin** for 5 minutes
3. Running tap water for 5 minutes
4. Immerse slides for 15 minutes in **Floxin B acc. Gram** (at +56°/+58°C)
5. Wash in distilled water
6. **Crystal violet acc. Gram-Weigert** for 3 minutes
7. Drain reagent in excess
8. **Iodine solution Gram** for 3 minutes
9. Wash in distilled water for 2 minutes
10. Leave the section to dry
11. **Xylene-aniline** in immersion for 1 minute
12. **Xylene-aniline** in immersion for 1 minute

DIAPATH

Results

Gram + bacteria:	Blue-Violet
Gram - bacteria:	Pink-Red
Nuclei:	Blue



Quality control

The products and the raw materials are entered and constantly monitored by computer systems that allow traceability between batch number of each single product and batches of their raw materials.

Instructions of use

To avoid mistakes, the product should be used by qualified and trained staff. Professional use product. The guidelines concerning safety on the workplace must be applied according to current regulations. The tools used for diagnosis must be suitable for diagnostic use in laboratory. The diagnosis should be performed only by authorized, trained and competent staff. Control sections should be used during each test to avoid incorrect results.

Storage






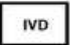

Store the product according to the specifications listed on the label. The product, if opportunely stored and integrally packed, is stable up to the expiry date reported on the label. Do not use after expiration date.

If the reagent is not stored as recommended, its performance may change and must be validated by the user. After opening, the reagent is stable up to expiration date but only if stored in its container and in accordance with the specifications listed on the label. It is recommended to close the container tightly after the use.

Disposal instruction

The expired and/or unused product must be disposed according to local waste regulations, based on danger classification on the label and after possible contaminations evaluation. In some cases it may be necessary an analytical evaluation to determine the correct waste classification and the danger features.

Labeling legend

 LOT	Batch n.	 Manufacturer	 Storage temperature limits
 REF	Product code	 Expiry date	 In vitro diagnostic medical device
 Photosensitive			

For more information see the MSDS.