

**Weigert –Van Gieson, long method***Stain for elastic fibers***Manufacturer: Diapath S.p.A.**

Codice	Test	Reagenti	Codici reagenti	Formato
		Periodic acid 1%	G016AA	1x30 ml
		Weigert rapid	C074AA	1x75 ml
		Jenkins reagent	D001AA	1x30 ml
010218	100	Iron hematoxylin acc. Weigert - reagent A	C022AA	1x30 ml
		Iron hematoxylin acc. Weigert - reagent B	C023AA	1x30 ml
		Picrofuchsin acc. Van Gieson	C060AA	1x30 ml

**Description**

The Kit supplies reagents to highlight both elastic fibers and connective tissue on paraffin sections. Staining with resorcin-fuchsin differentiates elastic fibers. Nuclei are shown with Weigert hematoxylin while the Picrofuchsin highlight the connective tissue. High selectivity due to long time staining protocol.

**Specimen and preparation kind**

- Preparation: paraffin section
- Suggested fixative: formalin
- Control: skin
- Storage temperature: +15°/+25°C
- Procedure time: 12 h + 40 min. with overnight incubation  
1h 40 min with incubation at 45°C
- Critical step: avoid section drying

**Staining protocol**

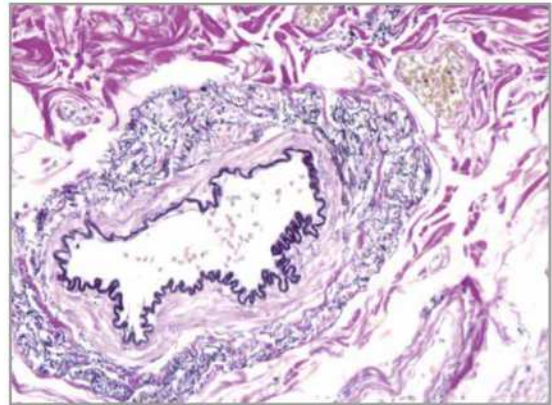
Drain reagents directly on section in a way to cover it completely. To avoid section excessive drying, use an incubator box.

1. Deparaffinize and hydrate to distilled water
  2. Cover the sections with **Periodic Acid 1%** for 5 minutes
  3. Pour **Weigert rapid** in a vertical jar for histology and dip the section. Incubate in overnight immersion at room temperature (alternatively cover the section and incubate 1 hour at +45°C in incubator box)
  4. Wash in distilled water
  5. Cover the sections with **Jenkins Reagent** for 10 minutes
  6. Wash in distilled water
  7. Prepare iron hematoxylin acc. Weigert: mix 10 drops of **Iron hematoxylin acc. Weigert - reagent A** and 10 drops of **Iron hematoxylin acc. Weigert - reagent B**
  8. Cover the section with hematoxylin acc. Weigert for 8-10 minutes
  9. Running tap water for at least 10 minutes
  10. Cover the sections with **Picrofuchsin acc. Van Gieson** for 5-7 minutes
  11. Wash quickly in distilled water
  12. Dehydrate quickly, clear and mount with balsam
- NB: Weigert rapid** can be used again after filtration

# DIAPATH

## Results

Elastic fibers:	from dark blue to black
Nuclei:	Black
Collagen:	different shades of red
Connective tissue and erythrocytes:	Yellow



## Quality control

The products and the raw materials are entered and constantly monitored by computer systems that allow traceability between batch number of each single product and batches of their raw materials.

## Instructions of use

To avoid mistakes, the product should be used by qualified and trained staff. Professional use product. The guidelines concerning safety on the workplace must be applied according to current regulations. The tools used for diagnosis must be suitable for diagnostic use in laboratory. The diagnosis should be performed only by authorized, trained and competent staff. Control sections should be used during each test to avoid incorrect results.

## Storage

Store the product according to the specifications listed on the label. The product, if opportunely stored and integrally packed, is stable up to the expiry date reported on the label. Do not use after expiration date.

If the reagent is not stored as recommended, its performance may change and must be validated by the user. After opening, the reagent is stable up to expiration date but only if stored in its container and in accordance with the specifications listed on the label. It is recommended to close the container tightly after the use.

## Disposal instruction

The expired and/or unused product must be disposed according to local waste regulations, based on danger classification on the label and after possible contaminations evaluation. In some cases it may be necessary an analytical evaluation to determine the correct waste classification and the danger features.

## Labeling legend



Batch n.



Manufacturer



Storage temperature limits



Product code



Expiry date



In vitro diagnostic medical device



Photosensitive

For more information see the MSDS.