

Weigert for elastic fibers, long method*Staining for elastic fibers***Manufacturer: Diapath S.p.A.**

Code	Tests	Reagents	Code	Packaging
		Potassium permanganate sol. 0.5% acc. Mallory	G012AA	1x30 ml
		Sulfuric acid 0.5% acc. Mallory	G004AA	1x30 ml
010217	100	Oxalic acid acc. Mallory	G027AA	1x30 ml
		Rapid Weigert	C074AA	1x75 ml
		Jenkins reagent	D001AA	1x30 ml

Description

The Kit is designed for demonstrating elastic fibers in paraffin sections. High selectivity due to long time staining protocol.

Specimen and preparation kind

- Preparation: Paraffin section
- Suggested fixative: Formalin
- Control: Skin
- Storage temperature: +15°/+25°C
- Procedure time: 24 h + 20 min with overnight incubation
1 h 20 min with incubation at +45°C
- Critical step: Avoid section drying

Staining Protocol

Drain reagents on section in a way to cover it completely.
To avoid section excessive drying, use an incubator box.

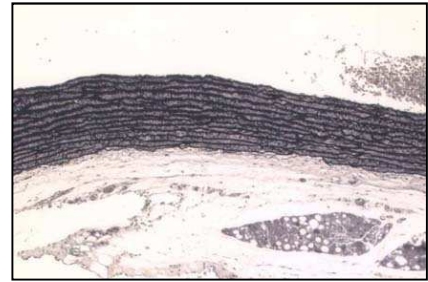
1. Deparaffinize and hydrate to distilled water
2. Cover the section with 5 drops of **Potassium permanganate 0.5%** and 5 drops of **Sulfuric acid 0.5%**, incubate for 5 minutes
3. Wash in distilled water
4. **Oxalic acid** for 5 minutes
5. Wash in distilled water
6. **Rapid Weigert**: incubate the slide in overnight immersion at room temperature or alternatively cover the section and incubate 1 hour at 45°C in incubator box
7. Wash in distilled water
8. **Jenkins reagent** for 10 minutes
9. Wash in distilled water
10. Dehydrate, clear
11. Mount

WARNING: if used in immersion, **Rapid Weigert** can be used again after filtration.

DIAPATH

Results

Elastic fibers: from dark Grey to Black



Quality control

The products and the raw materials are entered and constantly monitored by computer systems that allow traceability between batch number of each single product and batches of their raw materials.

Instructions of use

To avoid mistakes, the product should be used by qualified and trained staff. Professional use product. The guidelines concerning safety on the workplace must be applied according to current regulations. The tools used for diagnosis must be suitable for diagnostic use in laboratory. The diagnosis should be performed only by authorized, trained and competent staff. Control sections should be used during each test to avoid incorrect results.

Storage



Store the product according to the specifications listed on the label. The product, if opportunely stored and integrally packed, is stable up to the expiry date reported on the label. Do not use after expiration date.

If the reagent is not stored as recommended, its performance may change and must be validated by the user. After opening, the reagent is stable up to expiration date but only if stored in its container and in accordance with the specifications listed on the label. It is recommended to close the container tightly after the use.

Disposal instruction

The expired and/or unused product must be disposed according to local waste regulations, based on danger classification on the label and after possible contaminations evaluation. In some cases it may be necessary an analytical evaluation to determine the correct waste classification and the danger features.

Labeling legend

 Batch n.	 Manufacturer	 Storage temperature limits
 Product code	 Expiry date	 In vitro diagnostic medical device
 Photosensitive		

For more information see the MSDS.