

**Congo Red***Kit for visualization of amyloid***Manufacturer: Diapath S.p.A.****Use**

Reagents for in vitro diagnostic use

Code	Test	Reagents	Code	Packaging
010214	100	Congo Red acc. Puchtler	C064AA	1x30 ml
		Litium carbonate saturated aqueous solution	G009AA	1x30 ml
		Differentiating alcoholic buffer	G055AA	1x30 ml
		Mayer hematoxylin	C030AA	1x30 ml

**Description**

The kit is intended for use in histological visualization of amyloid (amorphous substance). The amyloid takes a particular red stain and green birefringence under polarized light.

**Specimen and preparation kind**

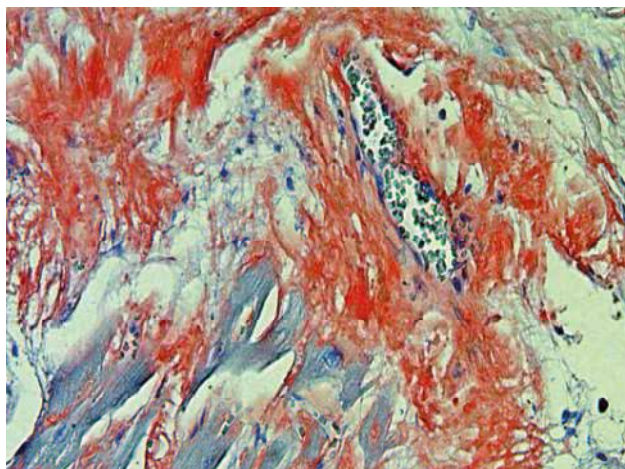
- Preparation: paraffin section
- Suggested fixative: formalin
- Control: positive case (ex. Amyloidosis)
- Storage temperature: +15°/+25°C
- Procedure time: 1 h
- Critical step: to highlight, with polarized light, cut section with thickness of at least 10 µm

**Staining protocol**

- Drain reagents directly on section
  - To avoid section excessive drying, use an incubator box.
1. Deparaffinize and hydrate section to distilled water
  2. **Congo Red acc. Puchtler** for 30 minutes
  3. Drain the slide and go to the next step
  4. **Litium carbonate saturated aqueous solution** for 10 minutes
  5. Wash quickly in distilled water
  6. **Differentiating alcoholic buffer** for 15-30 seconds
  7. Wash in running tap water for 5 minutes
  8. **Mayer hematoxylin** for 5 minutes
  9. Running tap water for at least 10 minutes
  10. Dehydrate quickly, clear and mount with balsam

## Results

- Amyloid: From Pink to Red
- Nuclei: Blue-Violet



## Quality control

The products and the raw materials are entered and constantly monitored by computer systems that allow traceability between batch number of each single product and batches of their raw materials.

## Instructions of use

To avoid mistakes, the product should be used by qualified and trained staff. Professional use product. The guidelines concerning safety on the workplace must be applied according to current regulations. The tools used for diagnosis must be suitable for diagnostic use in laboratory. The diagnosis should be performed only by authorized, trained and competent staff. Control sections should be used during each test to avoid incorrect results.

## Storage

Store the product according to the specifications listed on the label. The product, if opportunely stored and integrally packed, is stable up to the expiry date reported on the label. Do not use after expiration date.

If the reagent is not stored as recommended, its performance may change and must be validated by the user. After opening, the reagent is stable up to expiration date but only if stored in its container and in accordance with the specifications listed on the label. It is recommended to close the container tightly after the use.

## Disposal instruction

The expired and/or unused product must be disposed according to local waste regulations, based on danger classification on the label and after possible contaminations evaluation. In some cases it may be necessary an analytical evaluation to determine the correct waste classification and the danger features.

## Labeling legend



Batch n.



Manufacturer



Storage temperature limits



Product code



Expiry date



In vitro diagnostic medical device



Photosensitive

For more information see the MSDS.