

Azan Trichrome*Kit for connective tissue staining***Manufacturer: Diapath S.p.A.****Use**

Reagents for in vitro diagnostic use.

Code	Test	Reagents	Code	Packaging
		Azocarmine G acc. Heidenhain	C007AA	1x100 ml
		Aniline mixture	G052AA	1x30 ml
010212	100	Azan buffer	G053AA	1x30 ml
		Phosphotungstic Acid 5%	G054AA	1x100 ml
		Azan mixture	C100AA	1x100 ml

Description

- Azan trichrome is a version of Mallory trichrome.
- The kit is intended for use in histological visualization of fibers, glial fibers, collagen, glomerular stroma and erythrocytes on the same.
- The staining protocol is suitable for hypophysis staining too.

Specimen and preparation kind

- Preparation: Paraffin section
- Suggested fixatives: Formalin
- Control: Kidney
- Storage temperature: +15°/+25°C
- Procedure time: 3 hours
- Critical step: steps at +56 °C

Staining protocol

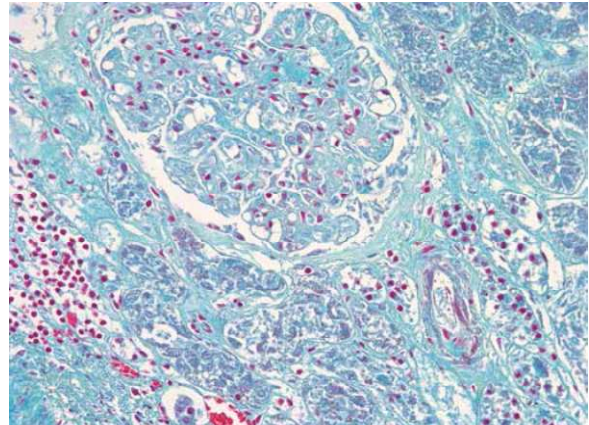
Drain reagents directly on section.

To avoid section excessive drying, use a wet incubator box.

1. Deparaffinize and hydrate section to distilled water
2. **Azocarmine G acc. Heidenhain** for 45 minutes at 56 °C
3. Leave it cool at room temperature for at least 10 minutes
4. Wash in running tap water the excess stain
5. **Aniline mixture** for 1 minute
6. Drain slide and go to the next step
7. **Azan buffer** for 1 minute
8. Wash quickly in distilled water
9. **Phosphotungstic Acid 5%** for 60 minutes
10. Drain slide and go to the next step
11. **Azan mixture** per 60 minutes
12. Quick step in ethylic alcohol 95°
13. Complete dehydration and clear

Results

- Nuclei, Erythrocytes: Red
- Muscle: Orange
- Collagene fibers: Bright light blue



Quality control

The products and the raw materials are entered and constantly monitored by computer systems that allow traceability between batch number of each single product and batches of their raw materials.

Instructions of use

To avoid mistakes, the product should be used by qualified and trained staff. Professional use product. The guidelines concerning safety on the workplace must be applied according to current regulations. The tools used for diagnosis must be suitable for diagnostic use in laboratory. The diagnosis should be performed only by authorized, trained and competent staff. Control sections should be used during each test to avoid incorrect results.

Storage

Store the product according to the specifications listed on the label. The product, if opportunely stored and integrally packed, is stable up to the expiry date reported on the label. Do not use after expiration date.

If the reagent is not stored as recommended, its performance may change and must be validated by the user. After opening, the reagent is stable up to expiration date but only if stored in its container and in accordance with the specifications listed on the label. It is recommended to close the container tightly after the use.

Disposal instruction

The expired and/or unused product must be disposed according to local waste regulations, based on danger classification on the label and after possible contaminations evaluation. In some cases it may be necessary an analytical evaluation to determine the correct waste classification and the danger features.

Labeling legend



Batch n.



Manufacturer



Storage temperature limits



Product code



Expiry date



In vitro diagnostic medical device



Photosensitive

For more information see the MSDS.