

Masson trichrome

Stain for connective tissue, collagen, reticular and muscle fibers

Manufacturer: Diapath S.p.A.

Use

Reagents for in vitro diagnostic use

Code	Test	Reagents	Code	Packaging
		Iron Hematoxylin Weigert - reagent A	C022AA	1x30 ml
		Iron Hematoxylin Weigert - reagent B	C023AA	1x30 ml
010210	100	Picric acid saturated alcoholic solution	G003AA	1x30 ml
		Fuchsin Ponceau acc. Masson	C044AA	1x30 ml
		Phospomolibidic acid acc. Masson	G001AA	1x30 ml
		Blue aniline acc. Masson	C009AA	1x30 ml

Description

- The Masson trichrome is a special stain to show connective tissue, collagen, reticular and muscle fibers.
- In particular this protocol is characterized by a blue stain of collagen and reticulated fibers.

Specimen and preparation kind

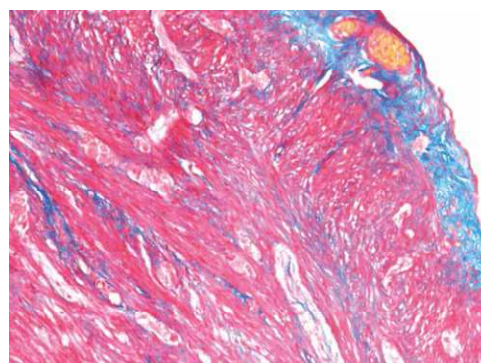
- Preparation: paraffin section
- Suggested fixative: formalin
- Control: intestine, liver
- Storage temperature +15°/+25°C
- Procedure time: 1 h 10 min

Staining protocol

- Prepare Weigert Hematoxylin solution: 10 drops **Iron Hematoxylin Weigert - reagent A** + 10 drops **Iron Hematoxylin Weigert - reagent B**
- Deparaffinize and hydrate to distilled water
- Cover the section with Weigert Hematoxylin solution (already prepared) for 10 minutes
- Running tap water for at least 5 minutes
- **Picric acid saturated alcoholic solution** for 4 minutes
- Wash in distilled water for 30 seconds
- **Fuchsin ponceau acc. Masson** for 4 minutes
- Running tap water
- **Phospomolibidic acid acc. Masson** for 4 minutes
- Running tap water
- **Blue aniline acc. Masson** for 5 minutes
- Dehydrate quickly, clear and mount with balsam

Results

- Nuclei: Black
- Muscle fibers, keratin, cytoplasm: Bright Red
- Collagen, mucus: Blue
- Erythrocytes: Yellow-Orange



Quality control

The products and the raw materials are entered and constantly monitored by computer systems that allow traceability between batch number of each single product and batches of their raw materials.

Instructions of use

To avoid mistakes, the product should be used by qualified and trained staff. Professional use product. The guidelines concerning safety on the workplace must be applied according to current regulations. The tools used for diagnosis must be suitable for diagnostic use in laboratory. The diagnosis should be performed only by authorized, trained and competent staff. Control sections should be used during each test to avoid incorrect results.

Storage

Store the product according to the specifications listed on the label. The product, if opportunely stored and integrally packed, is stable up to the expiry date reported on the label. Do not use after expiration date.

If the reagent is not stored as recommended, its performance may change and must be validated by the user. After opening, the reagent is stable up to expiration date but only if stored in its container and in accordance with the specifications listed on the label. It is recommended to close the container tightly after the use.

Disposal instruction

The expired and/or unused product must be disposed according to local waste regulations, based on danger classification on the label and after possible contaminations evaluation. In some cases it may be necessary an analytical evaluation to determine the correct waste classification and the danger features.

Labeling legend



Batch n.



Manufacturer



Storage temperature limits



Product code



Expiry date



In vitro diagnostic medical device



Photosensitive

For more information see the MSDS.